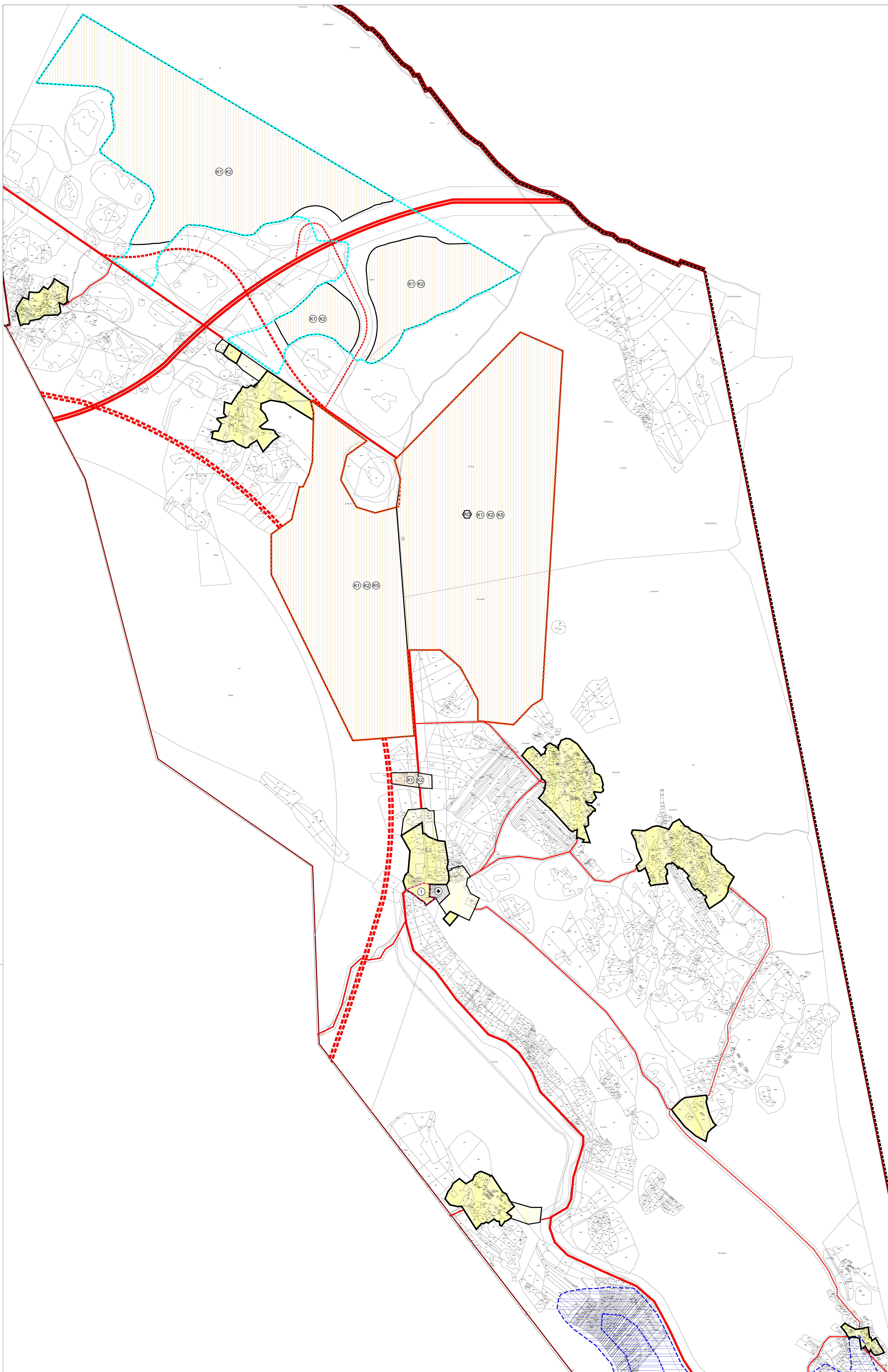


- GRANICA OBUHVATA PPLUO
- Teritorijalne i statističke granice**
- DRŽAVNA GRANICA
- GRANICA NASELJA
- Razvoj i uređenje prostora/površina naselja**
- IZGRADENI DIO GRADEVINSKOG PODRUČJA
- NEIZGRADENI DIO GRADEVINSKOG PODRUČJA
- NEIZGRADENI NEUREĐENI DIO GRADEVINSKOG PODRUČJA
- PROSTORI I SADRŽAJI JAVNE NAMJENE OD ZNAČAJA ZA RAZVOJ NASELJA:
1- javno- društveni sadržaji (uprava, pošta i sl.)
- Razvoj i uređenje prostora/površina izvan naselja**
- post. plan. GOSPODARSKA NAMJENA-POSLOVNA pretežito uslužne - K1, pretežito trgovačke - K2, mješovite zone pretežito poslovne - K5
- GROBLJE
- REKLAŽNO DVORIŠTE
- INFRASTRUKTURNI KORIDORI
- CESTOVNI PROMET**
- DRŽAVNA AUTOCESTA
- OSTALE DRŽAVNE CESTE
- LOKALNA CESTA
- OSTALE CESTE KOJE NISU JAVNE
- Područja posebnih ograničenja u korištenju**
- POPLAVNA PODRUČJA:**
- RUKTKA - 100 godišnje poplave
- VRLO RUKTKA - 1000 godišnje poplave
- Područja i dijelovi primjene planskih mjera zaštite**
- URBANISTIČKI PLAN UREĐENJA (UPU) NA SNAZI: (Službeni glasnik Dubrovačko- neretvanske županije br. 14 od 31.12.2010.)
- OBUHVAT OBAVEZNE IZRADE URBANISTIČKOG PLANA UREĐENJA UPU poduzetničke zone Nova Sela II



<p>Općina: OPĆINA KULA NORINSKA</p> <p>Županija: DUBROVAČKO- NERETVANSKA ŽUPANIJA</p> <p>Naziv prostornog plana: NOVA SELA</p>	
<p>IZMJENE I DOPUNE PROSTORNOG PLANA UREĐENJA OPĆINE KULA NORINSKA</p> <p>Naziv kartografskog prikaza: GRADEVINSKO PODRUČJE NASELJA NOVA SELA</p>	
<p>Broj kartografskog prikaza: 4.6.</p> <p>Mjerilo kartografskog prikaza: 1:5000</p>	<p>Općinska predstavničko tijelo o izradi plana (službeno glasilo): "Službeni glasnik Dubrovačko- neretvanske županije" broj 09/10, 14/11, 14/13, 14/15, 14/16, 14/17, 14/18, 14/19, 14/20, 14/21, 14/22, 14/23, 14/24, 14/25, 14/26, 14/27, 14/28, 14/29, 14/30, 14/31, 14/32, 14/33, 14/34, 14/35, 14/36, 14/37, 14/38, 14/39, 14/40, 14/41, 14/42, 14/43, 14/44, 14/45, 14/46, 14/47, 14/48, 14/49, 14/50, 14/51, 14/52, 14/53, 14/54, 14/55, 14/56, 14/57, 14/58, 14/59, 14/60, 14/61, 14/62, 14/63, 14/64, 14/65, 14/66, 14/67, 14/68, 14/69, 14/70, 14/71, 14/72, 14/73, 14/74, 14/75, 14/76, 14/77, 14/78, 14/79, 14/80, 14/81, 14/82, 14/83, 14/84, 14/85, 14/86, 14/87, 14/88, 14/89, 14/90, 14/91, 14/92, 14/93, 14/94, 14/95, 14/96, 14/97, 14/98, 14/99, 14/100, 14/101, 14/102, 14/103, 14/104, 14/105, 14/106, 14/107, 14/108, 14/109, 14/110, 14/111, 14/112, 14/113, 14/114, 14/115, 14/116, 14/117, 14/118, 14/119, 14/120, 14/121, 14/122, 14/123, 14/124, 14/125, 14/126, 14/127, 14/128, 14/129, 14/130, 14/131, 14/132, 14/133, 14/134, 14/135, 14/136, 14/137, 14/138, 14/139, 14/140, 14/141, 14/142, 14/143, 14/144, 14/145, 14/146, 14/147, 14/148, 14/149, 14/150, 14/151, 14/152, 14/153, 14/154, 14/155, 14/156, 14/157, 14/158, 14/159, 14/160, 14/161, 14/162, 14/163, 14/164, 14/165, 14/166, 14/167, 14/168, 14/169, 14/170, 14/171, 14/172, 14/173, 14/174, 14/175, 14/176, 14/177, 14/178, 14/179, 14/180, 14/181, 14/182, 14/183, 14/184, 14/185, 14/186, 14/187, 14/188, 14/189, 14/190, 14/191, 14/192, 14/193, 14/194, 14/195, 14/196, 14/197, 14/198, 14/199, 14/200, 14/201, 14/202, 14/203, 14/204, 14/205, 14/206, 14/207, 14/208, 14/209, 14/210, 14/211, 14/212, 14/213, 14/214, 14/215, 14/216, 14/217, 14/218, 14/219, 14/220, 14/221, 14/222, 14/223, 14/224, 14/225, 14/226, 14/227, 14/228, 14/229, 14/230, 14/231, 14/232, 14/233, 14/234, 14/235, 14/236, 14/237, 14/238, 14/239, 14/240, 14/241, 14/242, 14/243, 14/244, 14/245, 14/246, 14/247, 14/248, 14/249, 14/250, 14/251, 14/252, 14/253, 14/254, 14/255, 14/256, 14/257, 14/258, 14/259, 14/260, 14/261, 14/262, 14/263, 14/264, 14/265, 14/266, 14/267, 14/268, 14/269, 14/270, 14/271, 14/272, 14/273, 14/274, 14/275, 14/276, 14/277, 14/278, 14/279, 14/280, 14/281, 14/282, 14/283, 14/284, 14/285, 14/286, 14/287, 14/288, 14/289, 14/290, 14/291, 14/292, 14/293, 14/294, 14/295, 14/296, 14/297, 14/298, 14/299, 14/300, 14/301, 14/302, 14/303, 14/304, 14/305, 14/306, 14/307, 14/308, 14/309, 14/310, 14/311, 14/312, 14/313, 14/314, 14/315, 14/316, 14/317, 14/318, 14/319, 14/320, 14/321, 14/322, 14/323, 14/324, 14/325, 14/326, 14/327, 14/328, 14/329, 14/330, 14/331, 14/332, 14/333, 14/334, 14/335, 14/336, 14/337, 14/338, 14/339, 14/340, 14/341, 14/342, 14/343, 14/344, 14/345, 14/346, 14/347, 14/348, 14/349, 14/350, 14/351, 14/352, 14/353, 14/354, 14/355, 14/356, 14/357, 14/358, 14/359, 14/360, 14/361, 14/362, 14/363, 14/364, 14/365, 14/366, 14/367, 14/368, 14/369, 14/370, 14/371, 14/372, 14/373, 14/374, 14/375, 14/376, 14/377, 14/378, 14/379, 14/380, 14/381, 14/382, 14/383, 14/384, 14/385, 14/386, 14/387, 14/388, 14/389, 14/390, 14/391, 14/392, 14/393, 14/394, 14/395, 14/396, 14/397, 14/398, 14/399, 14/400, 14/401, 14/402, 14/403, 14/404, 14/405, 14/406, 14/407, 14/408, 14/409, 14/410, 14/411, 14/412, 14/413, 14/414, 14/415, 14/416, 14/417, 14/418, 14/419, 14/420, 14/421, 14/422, 14/423, 14/424, 14/425, 14/426, 14/427, 14/428, 14/429, 14/430, 14/431, 14/432, 14/433, 14/434, 14/435, 14/436, 14/437, 14/438, 14/439, 14/440, 14/441, 14/442, 14/443, 14/444, 14/445, 14/446, 14/447, 14/448, 14/449, 14/450, 14/451, 14/452, 14/453, 14/454, 14/455, 14/456, 14/457, 14/458, 14/459, 14/460, 14/461, 14/462, 14/463, 14/464, 14/465, 14/466, 14/467, 14/468, 14/469, 14/470, 14/471, 14/472, 14/473, 14/474, 14/475, 14/476, 14/477, 14/478, 14/479, 14/480, 14/481, 14/482, 14/483, 14/484, 14/485, 14/486, 14/487, 14/488, 14/489, 14/490, 14/491, 14/492, 14/493, 14/494, 14/495, 14/496, 14/497, 14/498, 14/499, 14/500, 14/501, 14/502, 14/503, 14/504, 14/505, 14/506, 14/507, 14/508, 14/509, 14/510, 14/511, 14/512, 14/513, 14/514, 14/515, 14/516, 14/517, 14/518, 14/519, 14/520, 14/521, 14/522, 14/523, 14/524, 14/525, 14/526, 14/527, 14/528, 14/529, 14/530, 14/531, 14/532, 14/533, 14/534, 14/535, 14/536, 14/537, 14/538, 14/539, 14/540, 14/541, 14/542, 14/543, 14/544, 14/545, 14/546, 14/547, 14/548, 14/549, 14/550, 14/551, 14/552, 14/553, 14/554, 14/555, 14/556, 14/557, 14/558, 14/559, 14/560, 14/561, 14/562, 14/563, 14/564, 14/565, 14/566, 14/567, 14/568, 14/569, 14/570, 14/571, 14/572, 14/573, 14/574, 14/575, 14/576, 14/577, 14/578, 14/579, 14/580, 14/581, 14/582, 14/583, 14/584, 14/585, 14/586, 14/587, 14/588, 14/589, 14/590, 14/591, 14/592, 14/593, 14/594, 14/595, 14/596, 14/597, 14/598, 14/599, 14/600, 14/601, 14/602, 14/603, 14/604, 14/605, 14/606, 14/607, 14/608, 14/609, 14/610, 14/611, 14/612, 14/613, 14/614, 14/615, 14/616, 14/617, 14/618, 14/619, 14/620, 14/621, 14/622, 14/623, 14/624, 14/625, 14/626, 14/627, 14/628, 14/629, 14/630, 14/631, 14/632, 14/633, 14/634, 14/635, 14/636, 14/637, 14/638, 14/639, 14/640, 14/641, 14/642, 14/643, 14/644, 14/645, 14/646, 14/647, 14/648, 14/649, 14/650, 14/651, 14/652, 14/653, 14/654, 14/655, 14/656, 14/657, 14/658, 14/659, 14/660, 14/661, 14/662, 14/663, 14/664, 14/665, 14/666, 14/667, 14/668, 14/669, 14/670, 14/671, 14/672, 14/673, 14/674, 14/675, 14/676, 14/677, 14/678, 14/679, 14/680, 14/681, 14/682, 14/683, 14/684, 14/685, 14/686, 14/687, 14/688, 14/689, 14/690, 14/691, 14/692, 14/693, 14/694, 14/695, 14/696, 14/697, 14/698, 14/699, 14/700, 14/701, 14/702, 14/703, 14/704, 14/705, 14/706, 14/707, 14/708, 14/709, 14/710, 14/711, 14/712, 14/713, 14/714, 14/715, 14/716, 14/717, 14/718, 14/719, 14/720, 14/721, 14/722, 14/723, 14/724, 14/725, 14/726, 14/727, 14/728, 14/729, 14/730, 14/731, 14/732, 14/733, 14/734, 14/735, 14/736, 14/737, 14/738, 14/739, 14/740, 14/741, 14/742, 14/743, 14/744, 14/745, 14/746, 14/747, 14/748, 14/749, 14/750, 14/751, 14/752, 14/753, 14/754, 14/755, 14/756, 14/757, 14/758, 14/759, 14/760, 14/761, 14/762, 14/763, 14/764, 14/765, 14/766, 14/767, 14/768, 14/769, 14/770, 14/771, 14/772, 14/773, 14/774, 14/775, 14/776, 14/777, 14/778, 14/779, 14/780, 14/781, 14/782, 14/783, 14/784, 14/785, 14/786, 14/787, 14/788, 14/789, 14/790, 14/791, 14/792, 14/793, 14/794, 14/795, 14/796, 14/797, 14/798, 14/799, 14/800, 14/801, 14/802, 14/803, 14/804, 14/805, 14/806, 14/807, 14/808, 14/809, 14/810, 14/811, 14/812, 14/813, 14/814, 14/815, 14/816, 14/817, 14/818, 14/819, 14/820, 14/821, 14/822, 14/823, 14/824, 14/825, 14/826, 14/827, 14/828, 14/829, 14/830, 14/831, 14/832, 14/833, 14/834, 14/835, 14/836, 14/837, 14/838, 14/839, 14/840, 14/841, 14/842, 14/843, 14/844, 14/845, 14/846, 14/847, 14/848, 14/849, 14/850, 14/851, 14/852, 14/853, 14/854, 14/855, 14/856, 14/857, 14/858, 14/859, 14/860, 14/861, 14/862, 14/863, 14/864, 14/865, 14/866, 14/867, 14/868, 14/869, 14/870, 14/871, 14/872, 14/873, 14/874, 14/875, 14/876, 14/877, 14/878, 14/879, 14/880, 14/881, 14/882, 14/883, 14/884, 14/885, 14/886, 14/887, 14/888, 14/889, 14/890, 14/891, 14/892, 14/893, 14/894, 14/895, 14/896, 14/897, 14/898, 14/899, 14/900, 14/901, 14/902, 14/903, 14/904, 14/905, 14/906, 14/907, 14/908, 14/909, 14/910, 14/911, 14/912, 14/913, 14/914, 14/915, 14/916, 14/917, 14/918, 14/919, 14/920, 14/921, 14/922, 14/923, 14/924, 14/925, 14/926, 14/927, 14/928, 14/929, 14/930, 14/931, 14/932, 14/933, 14/934, 14/935, 14/936, 14/937, 14/938, 14/939, 14/940, 14/941, 14/942, 14/943, 14/944, 14/945, 14/946, 14/947, 14/948, 14/949, 14/950, 14/951, 14/952, 14/953, 14/954, 14/955, 14/956, 14/957, 14/958, 14/959, 14/960, 14/961, 14/962, 14/963, 14/964, 14/965, 14/966, 14/967, 14/968, 14/969, 14/970, 14/971, 14/972, 14/973, 14/974, 14/975, 14/976, 14/977, 14/978, 14/979, 14/980, 14/981, 14/982, 14/983, 14/984, 14/985, 14/986, 14/987, 14/988, 14/989, 14/990, 14/991, 14/992, 14/993, 14/994, 14/995, 14/996, 14/997, 14/998, 14/999, 1500.</p>
<p>Pravna osoba/tijelo koje je izradilo plan: 3E PROJEKTI d.o.o., Maksimirska 81, Zagreb</p> <p>Odgovorna osoba: Direktorica: INES MATULIĆ, MBA</p>	<p>Pravna osoba/tijelo koje je izradilo plan: 3E PROJEKTI d.o.o., Maksimirska 81, Zagreb</p> <p>Odgovorna osoba: Direktorica: INES MATULIĆ, MBA</p>
<p>Odgovorni voditelj: JELENA ŠIMAT, mag.ing.arch.</p> <p>Pečat odgovornog voditelja: _____</p>	<p>Odgovorni voditelj: JELENA ŠIMAT, mag.ing.arch.</p> <p>Pečat odgovornog voditelja: _____</p>
<p>Službeni tim u izradi plana: MIRJANA MILOŠEVIKI NTONTOS, mag.ing.arch. JELENA ŠIMAT, mag.ing.arch. TANJA UDOVIĆ, mag.ing.prosp.arch. NIKOLINA KREŠO, mag.ing.prosp.arch.</p> <p>Pečat predstavničkog tijela: _____</p>	<p>Službeni tim u izradi plana: MATEJ ŽIVKOVIĆ, mag.oec. VLADIMIR MODRIĆ, dipl.jur. SILVA NESEK, dipl.ing.bioteh. MILORAD BOŽIĆ, dipl.ing.prom.</p> <p>Pečat predstavničkog tijela: _____</p>
<p>Istovjetnost ovog prostornog plana s izvornikom ovjerava: _____</p>	<p>Istovjetnost ovog prostornog plana s izvornikom ovjerava: _____</p>