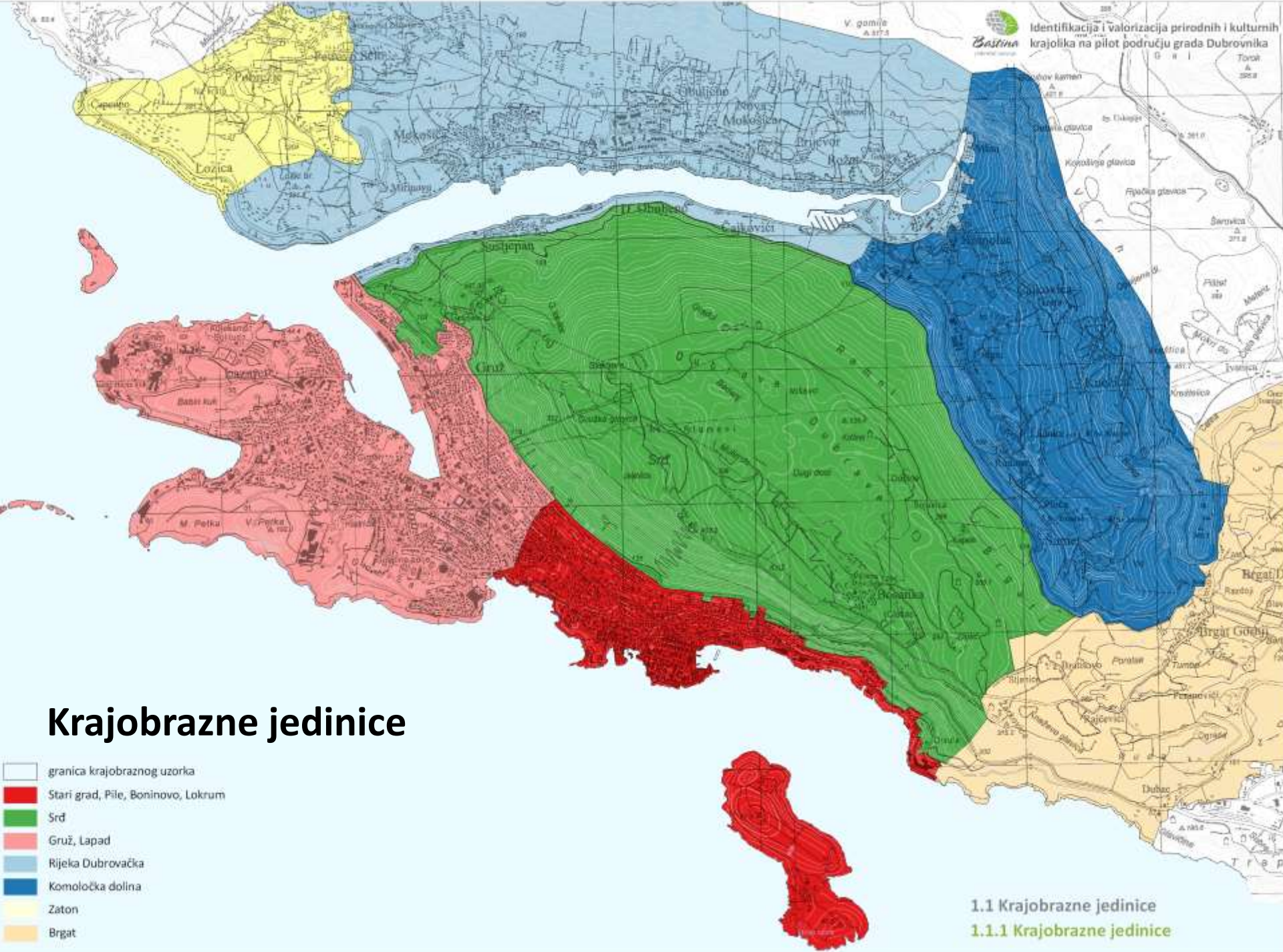


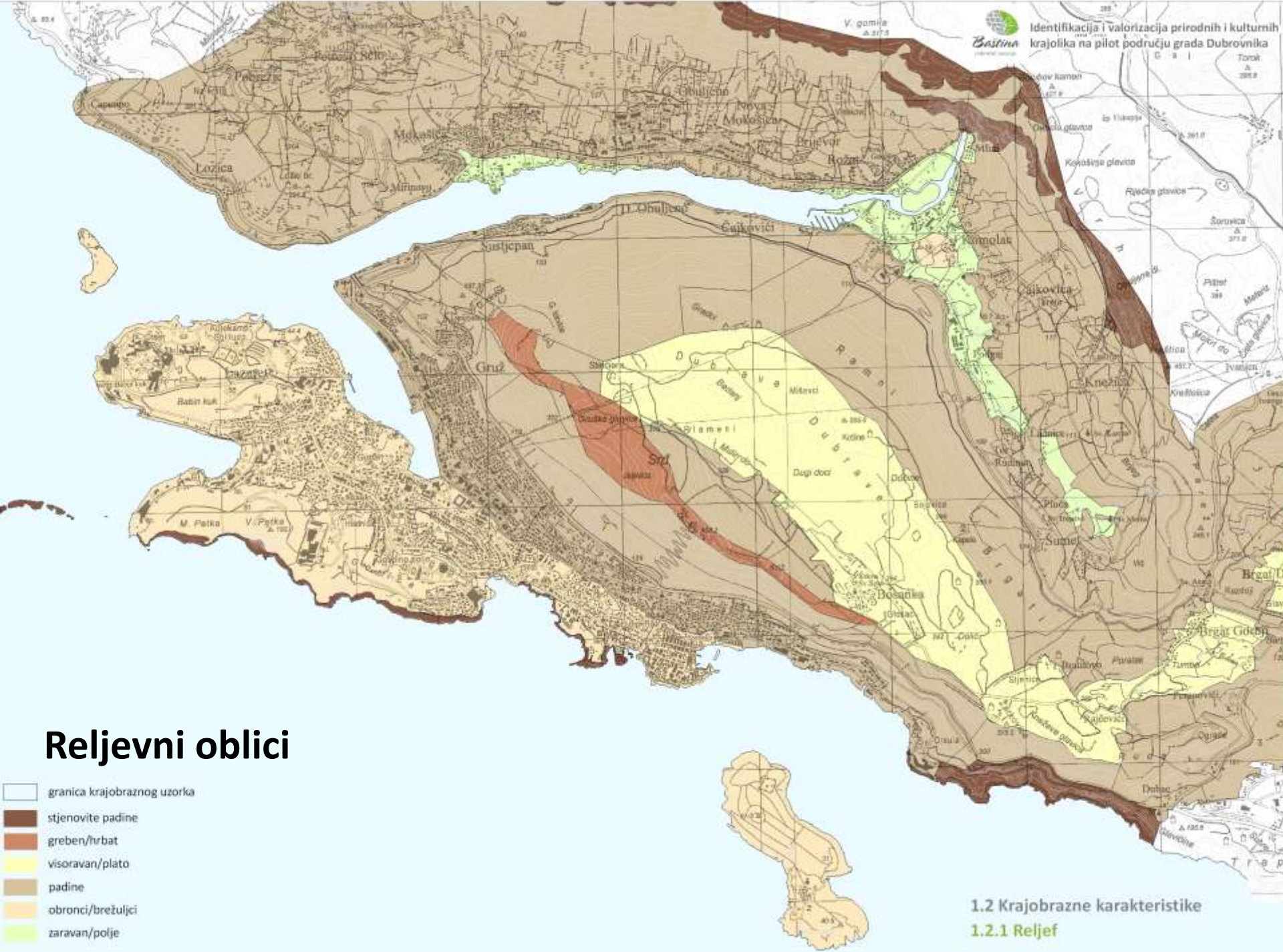
KRAJOBRAZNA TIPOLOGIJA



Krajobrazne jedinice

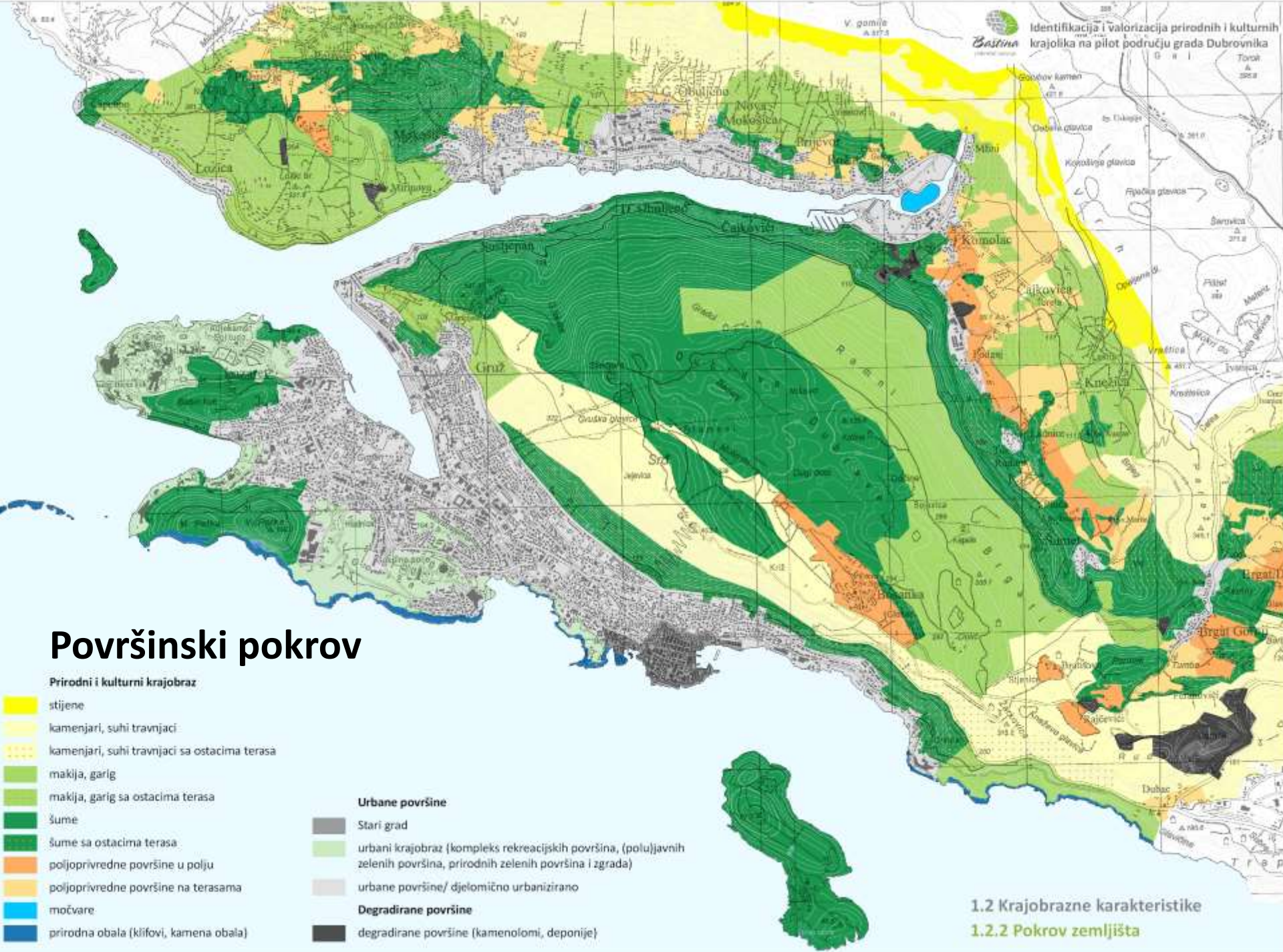
- granica krajobraznog uzorka
- Stari grad, Pile, Boninovo, Lokrum
- Srđ
- Gruž, Lapad
- Rijeka Dubrovačka
- Komološka dolina
- Zaton
- Brgat

1.1 Krajobrazne jedinice
1.1.1 Krajobrazne jedinice



Reljevni oblici

- granica krajobraznog uzorka
- stjenovite padine
- greben/hrbat
- visoravan/plato
- padine
- obronci/brežuljci
- zaravan/polje



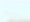



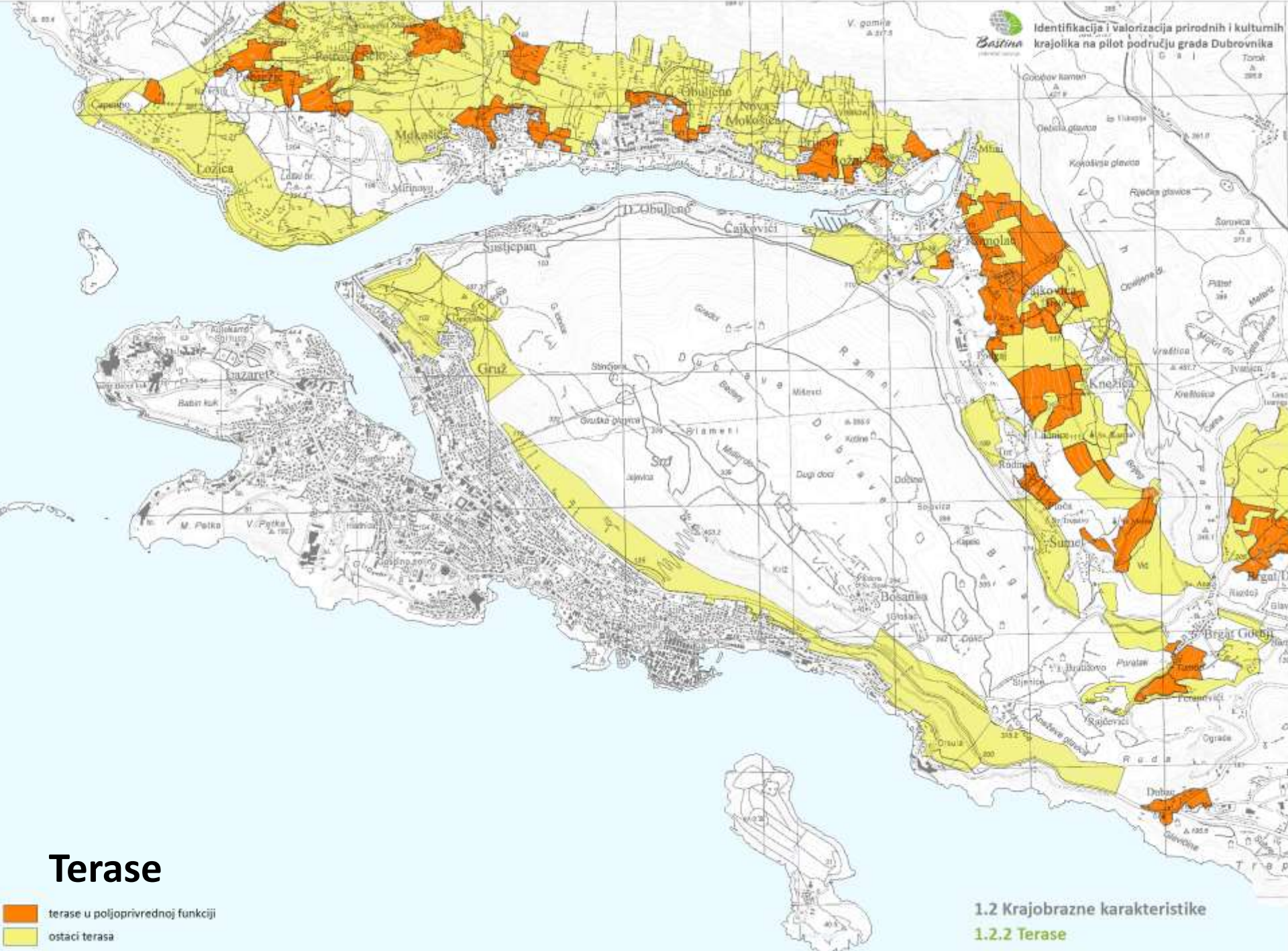
Površinski pokrov

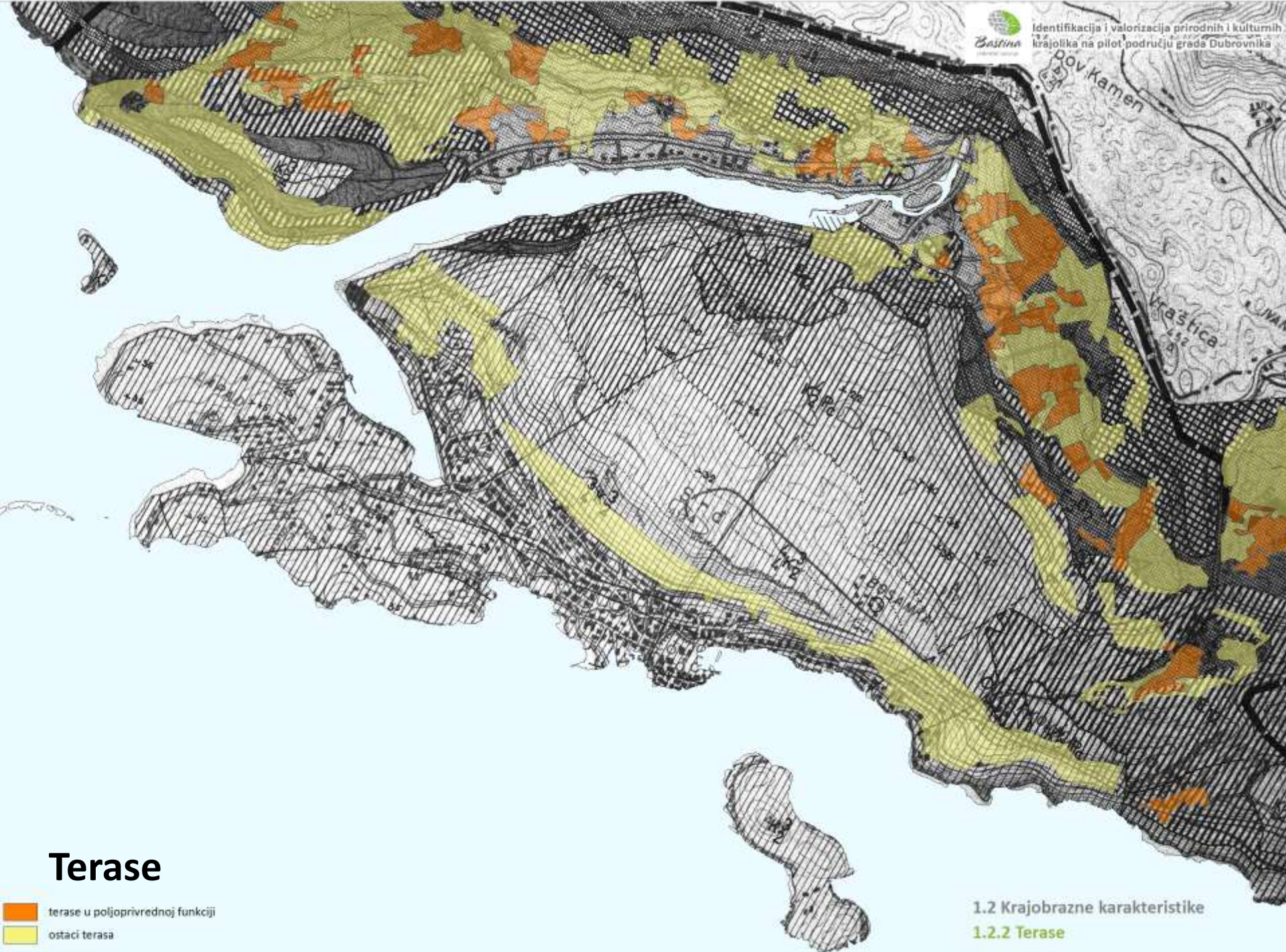
Prirodni i kulturni krajobraz

-  stijene
-  kamenjari, suhi travnjaci
-  kamenjari, suhi travnjaci sa ostacima terasa
-  makija, garig
-  makija, garig sa ostacima terasa
-  šume
-  šume sa ostacima terasa
-  poljoprivredne površine u polju
-  poljoprivredne površine na terasama
-  močvare
-  prirodna obala (klifovi, kamena obala)

Urbane površine

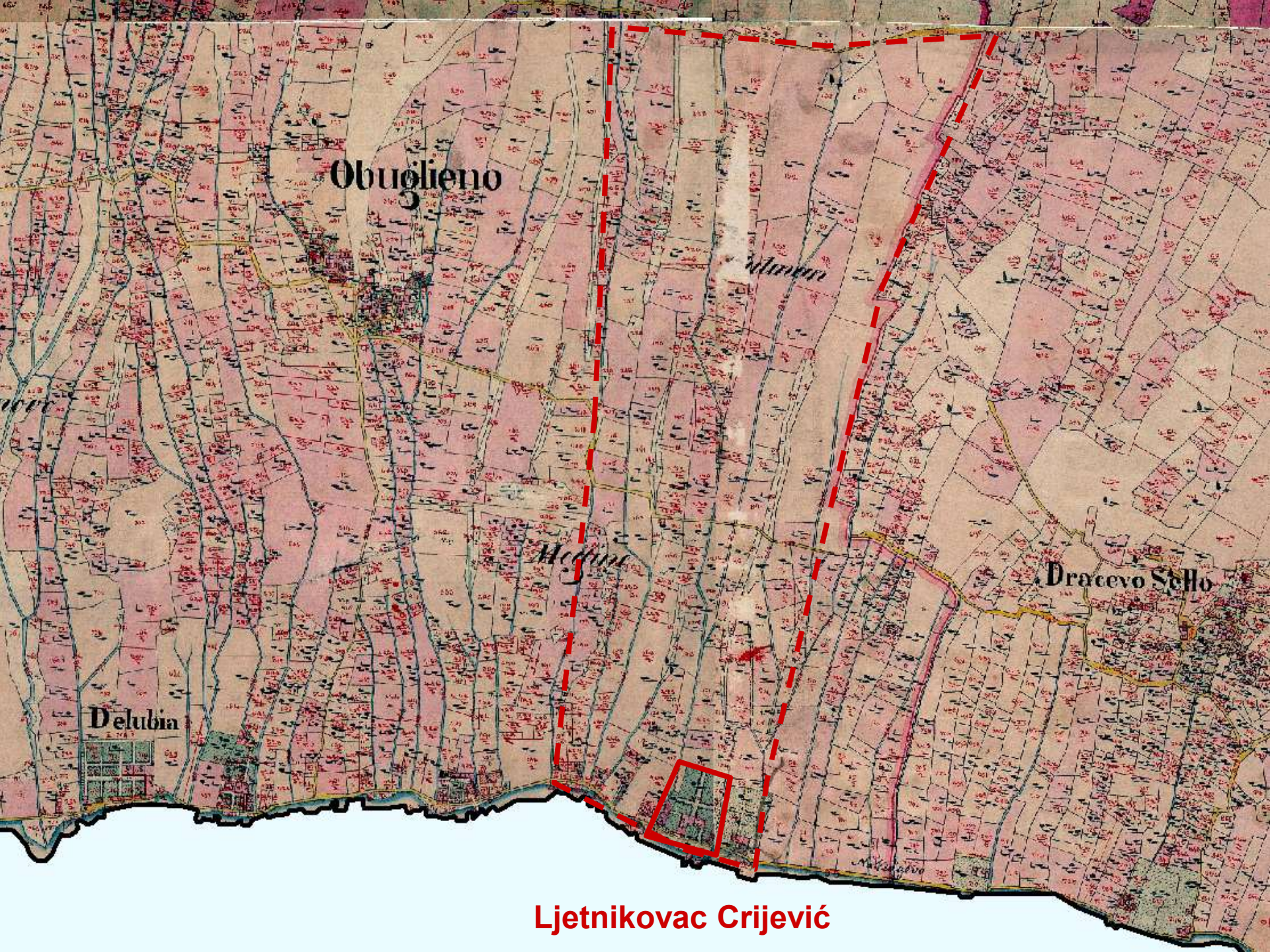
-  Stari grad
-  urbani krajobraz (kompleks rekreacijskih površina, (polu)javnih zelenih površina, prirodnih zelenih površina i zgrada)
-  urbane površine/ djelomično urbanizirano
- Degradirane površine**
-  degradirane površine (kamenolomi, deponije)





Terase

- terase u poljoprivrednoj funkciji
- ostaci terasa



Obuglieno

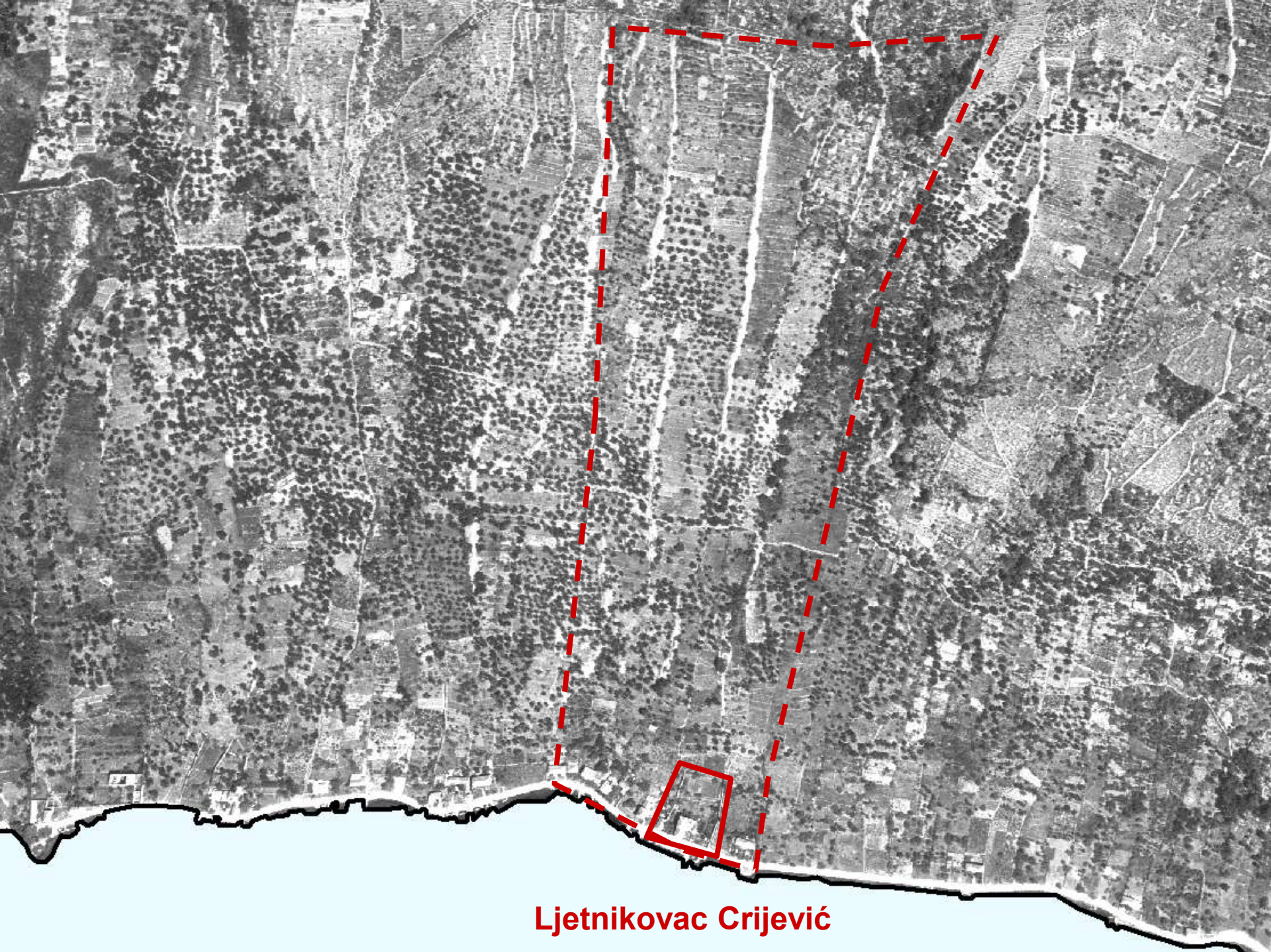
Medun

Medun

Dracevo Selo

Delubia

Ljetnikovac Crijević



Ljetnikovac Crijević

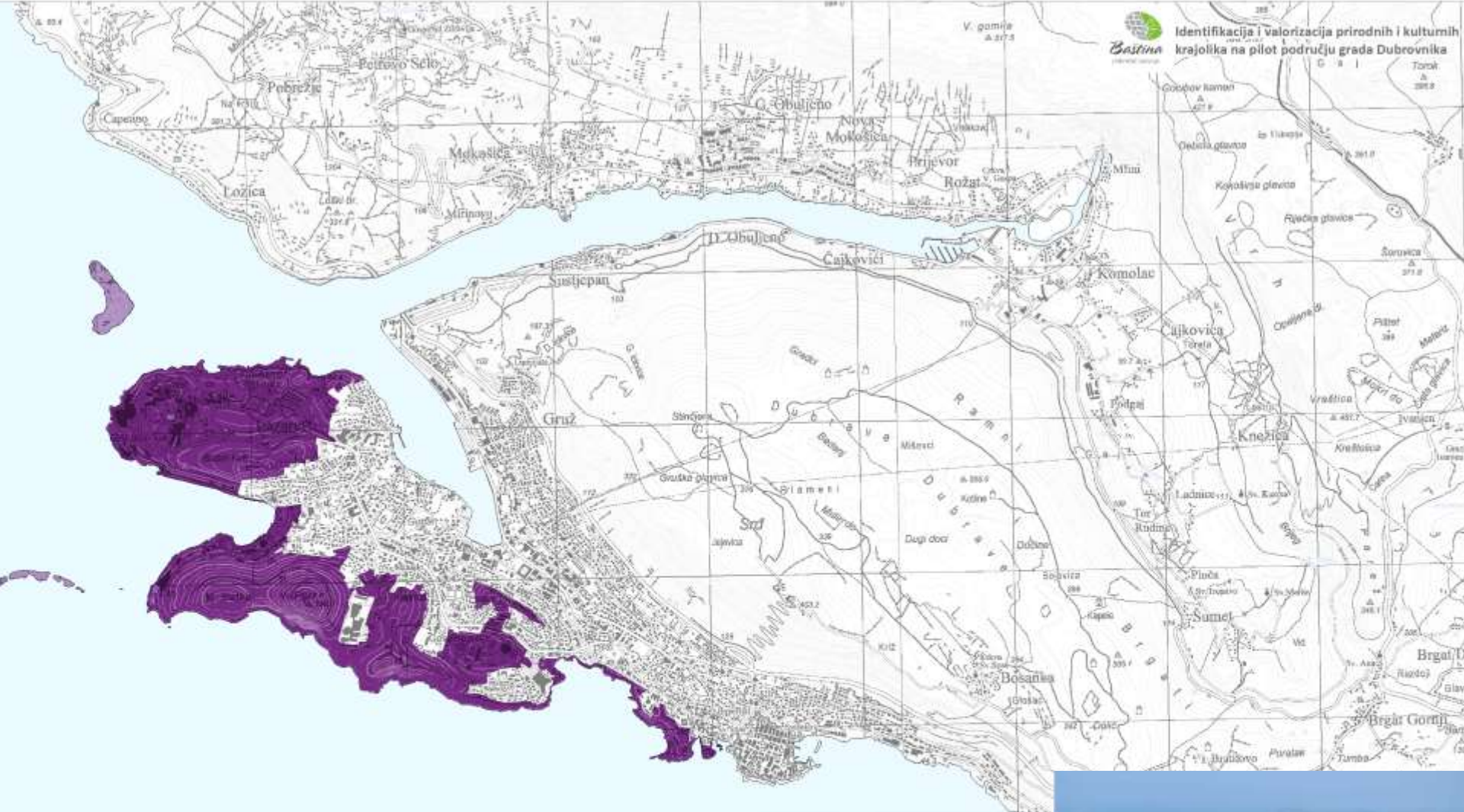












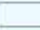



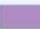
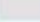

Obalni šumski krajobraz

- granica krajobraznog uzorka
- obalni krajobraz prepletanja šuma i urbanih elemenata
- brdoviti krajobraz prepletanja šuma, makije, gariga, suhih travnjaka, kamenjara i polja na zaravnima
- krajobraz redosljeda mješovite i mlene terase na vapnencu, suhih travnjaka i stepa
- krajobraz poljoprivrednih terasi i polja
- otoci
- uvale i podvisine

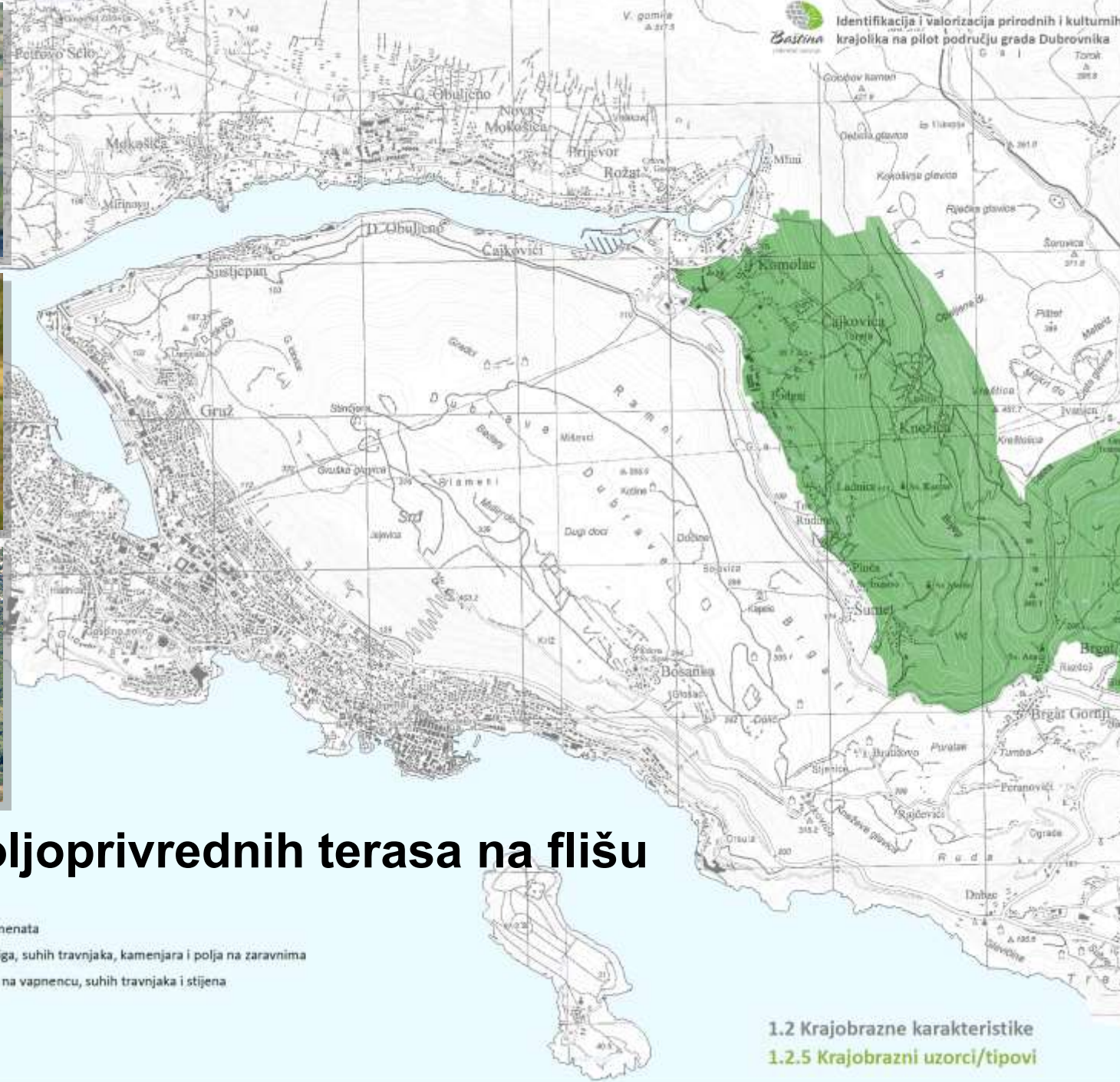
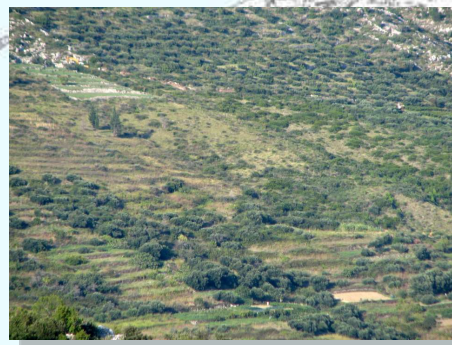




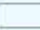

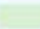




Brdoviti krajobraz prepletanja šuma, makije, gariga, suhих travnjaka, kamenjara i polja na zaravnima

-  granica krajobraznog uzorka
-  obalni krajobraz prepletanja šuma i urbanih elemenata
-  brdoviti krajobraz prepletanja šuma, makije, gariga, suhих travnjaka, kamenjara i polja na zaravnima
-  krajobraz redoslijeda mješovite namjene, terasa na vapnencu, suhих travnjaka i stijena
-  krajobraz poljoprivrednih terasa na flišu
-  otoci
-  urbane površine





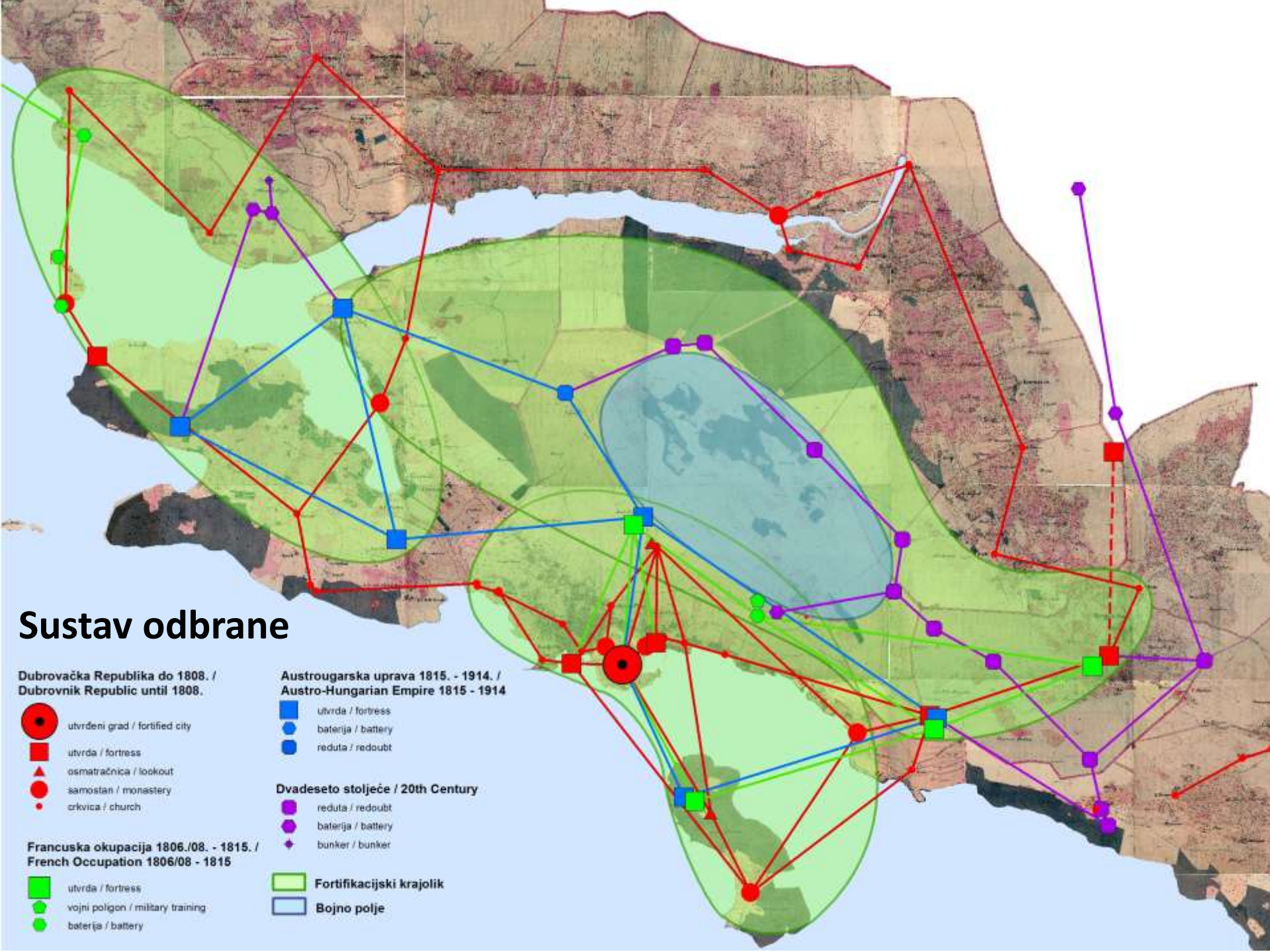
Krajobraz poljoprivrednih terasa na flišu

-  granica krajobraznog uzorka
-  obalni krajobraz prepletanja šuma i urbanih elemenata
-  brdoviti krajobraz prepletanja šuma, makije, gariga, suhih travnjaka, kamenjara i polja na zaravnima
-  krajobraz redoslijeda mješovite namjene, terasa na vapnencu, suhih travnjaka i stijena
-  krajobraz poljoprivrednih terasa na flišu
-  otoci
-  urbane površine

1.2 Krajobrazne karakteristike
1.2.5 Krajobrazni uzorci/tipovi



POVJESNA OSNOVA



Sustav odbrane

Dubrovačka Republika do 1808. /
Dubrovnik Republic until 1808.

- utvrđeni grad / fortified city
- utvrda / fortress
- ▲ osmatračnica / lookout
- samostan / monastery
- crkva / church

Francuska okupacija 1806./08. - 1815. /
French Occupation 1806/08 - 1815

- utvrda / fortress
- vojni poligon / military training
- baterija / battery

Austrougarska uprava 1815. - 1914. /
Austro-Hungarian Empire 1815 - 1914

- utvrda / fortress
- baterija / battery
- reduta / redoubt

Dvadeseto stoljeće / 20th Century

- reduta / redoubt
- baterija / battery
- ◆ bunker / bunker

- Fortifikacijski krajolik
- Bojno polje

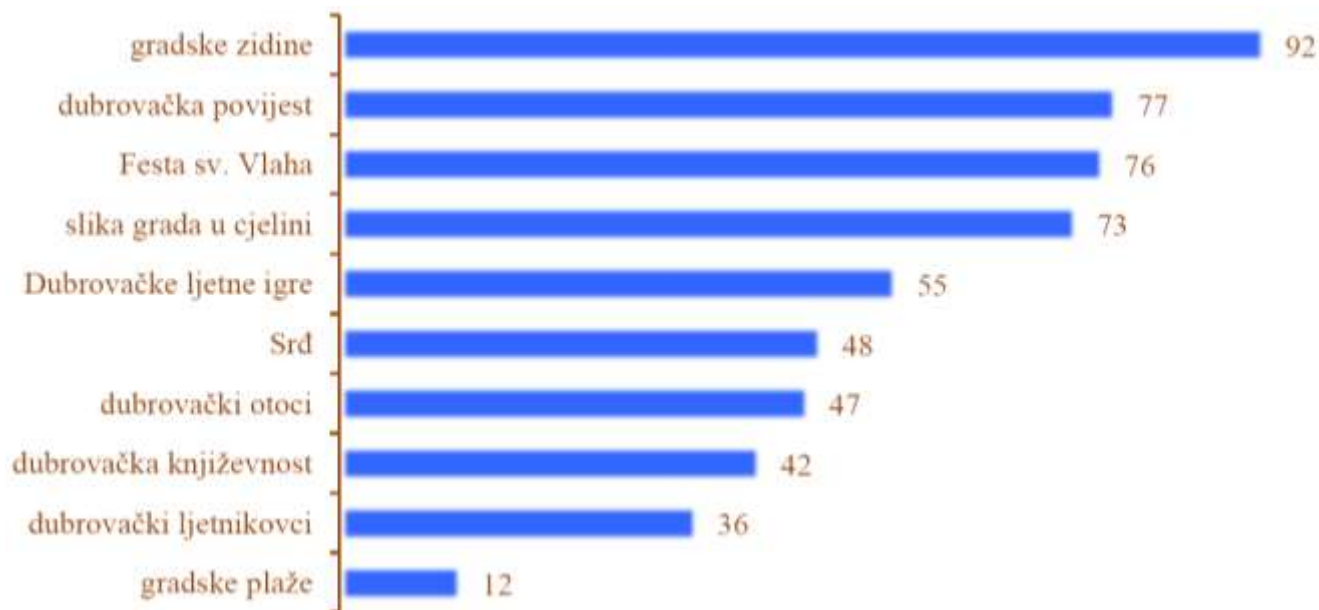
Urbana infastruktura Urbani povijesni krajobraz

- Brodogradilište / Shipyard
- Industrija / Industry (weapon, leather and fabric industry ...)
- ★ Mlin / Watermill
- Slanica / Salt storage
- ☼ Žitnica / Grain storage

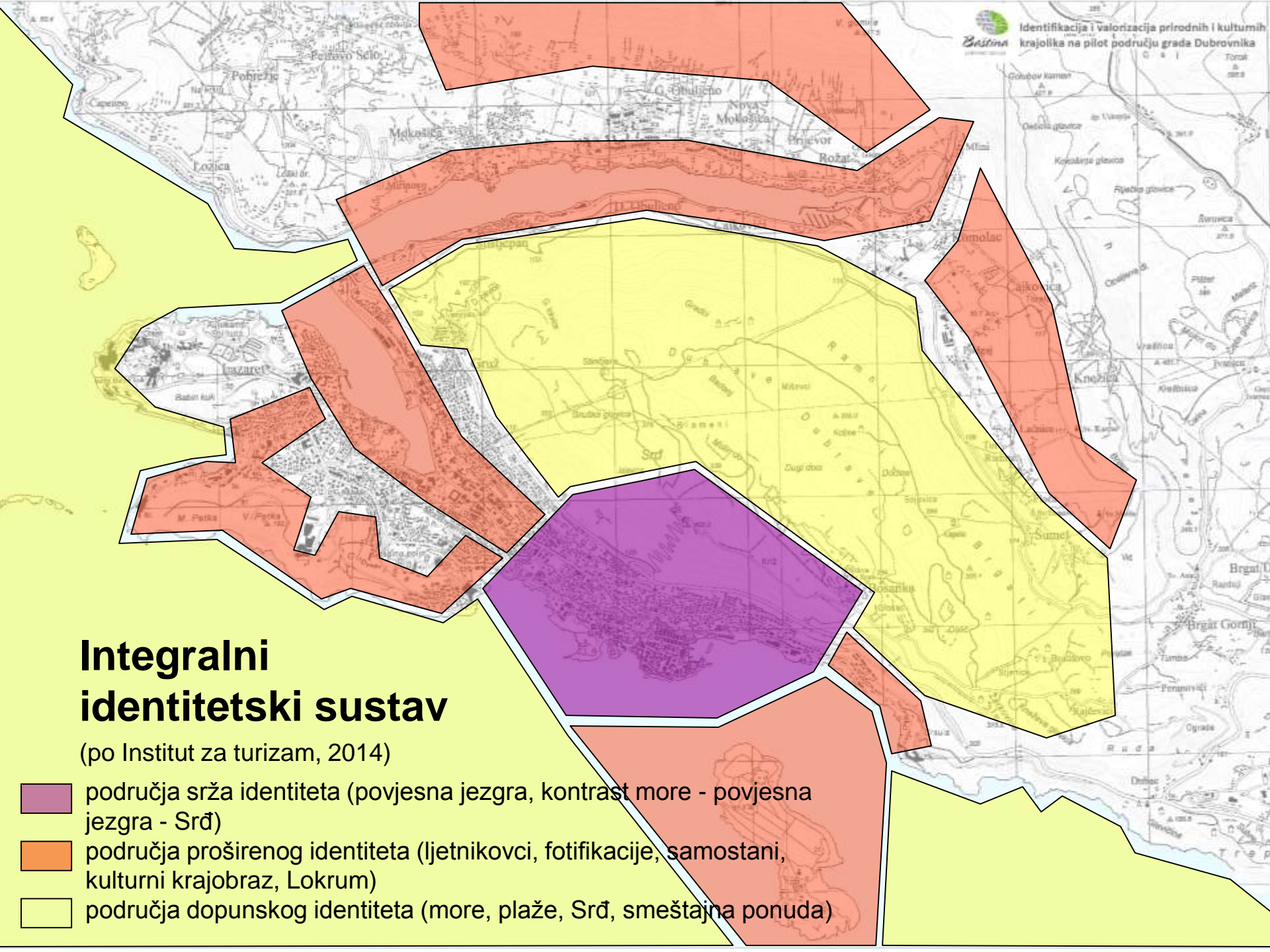
- izvor / springhead
- akvadukt put / aquaduct route
- Gornji Kono / Upper canal
- Srednji Kono / Middle canal
- Donji Kono / Lower canal
- Vertikala / Vertical canal
- Rezervoar / Reservoir
- Crpilište / Pumping station
- Fontana / Fountain
- Česma / Small fountain
- Odvodnja / Sewage

- Karavanski put / Caravan route
- Put za Kotor / Route for Kotor
- put / route
- francuski put / French route
- serpentina za Fort Imperial / route to Fort Imperial





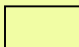


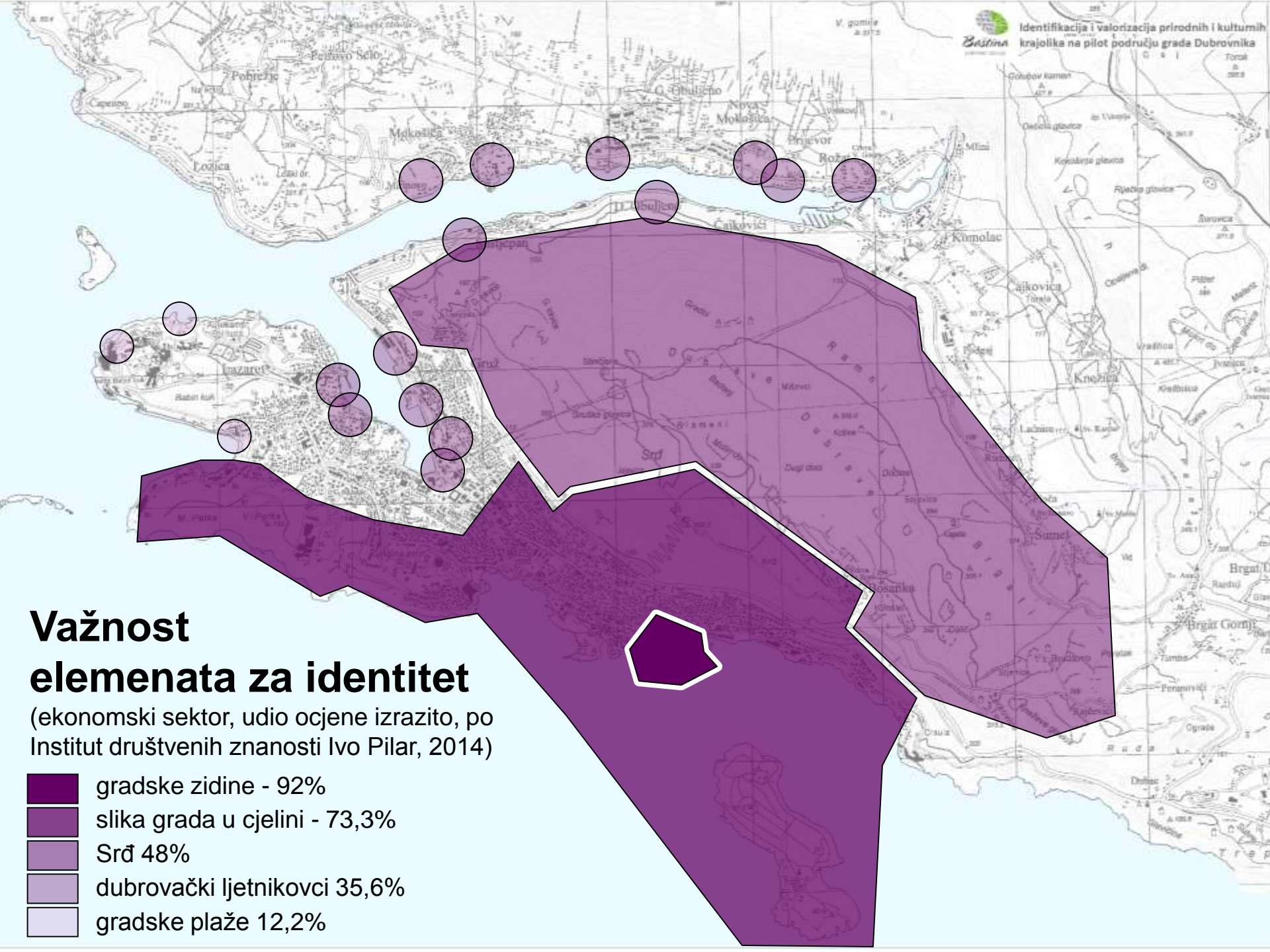
PROSTORIZACIJA ANKETE I IDENTETSKOG SUSTAVA



Integralni identitetski sustav

(po Institut za turizam, 2014)

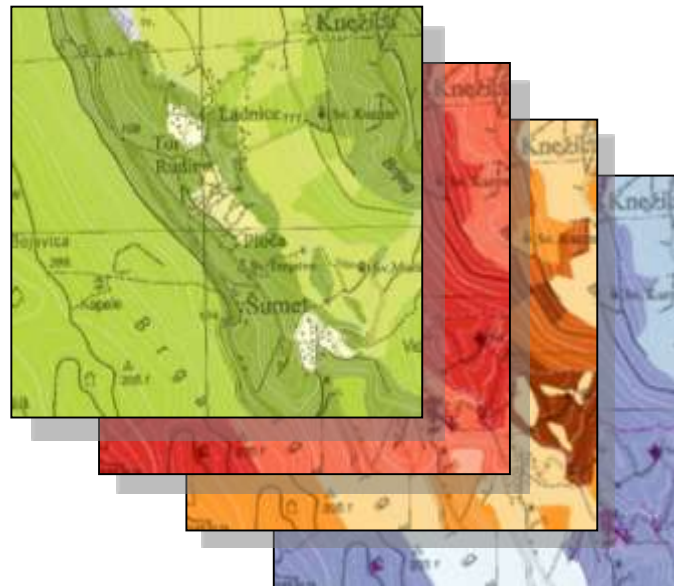
-  područja srža identiteta (povjesna jezgra, kontrast more - povjesna jezgra - Srđ)
-  područja proširenog identiteta (ljetnikovci, fotifikacije, samostani, kulturni krajobraz, Lokrum)
-  područja dopunskog identiteta (more, plaže, Srđ, smeštajna ponuda)



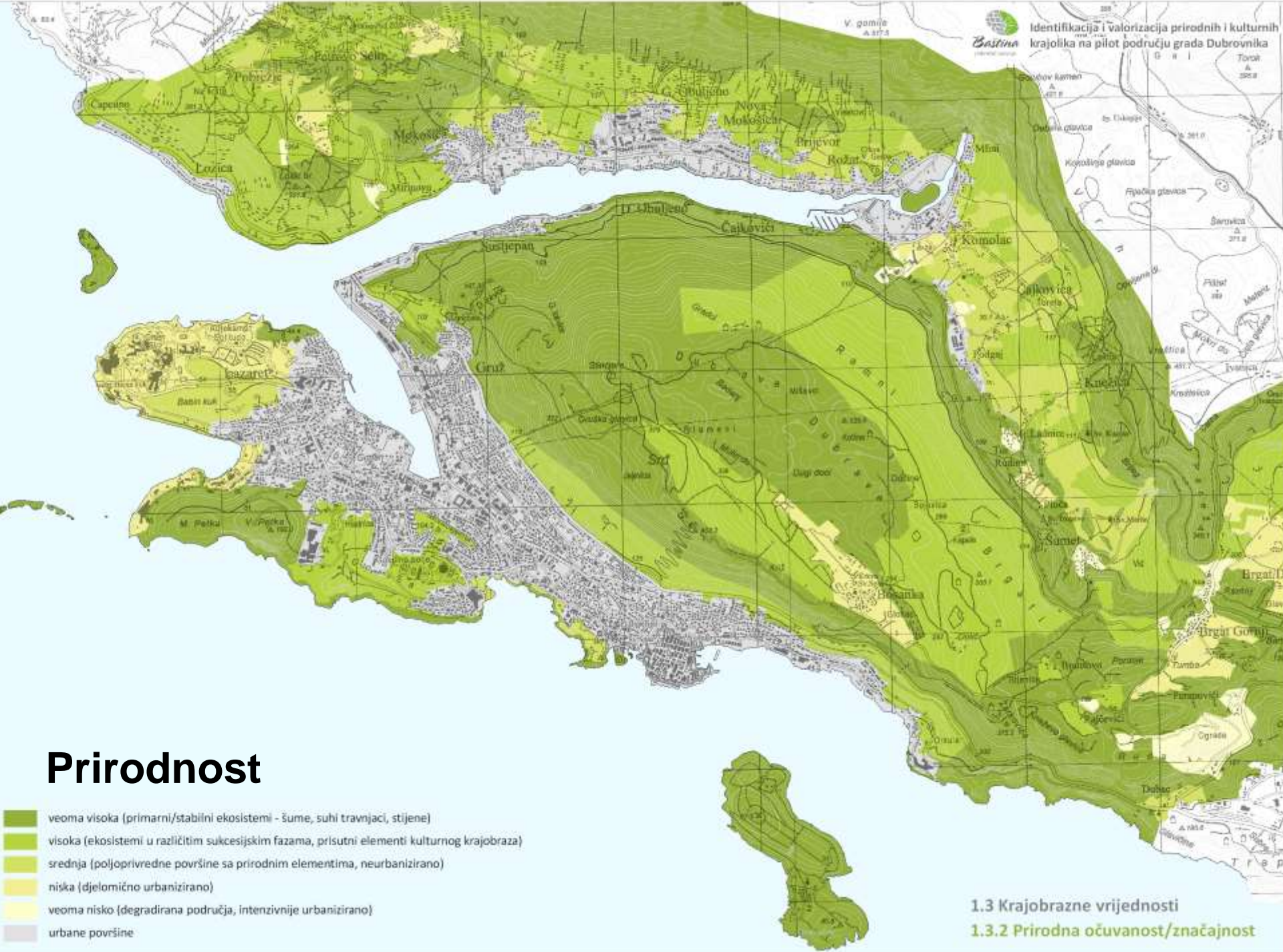
Važnost elemenata za identitet

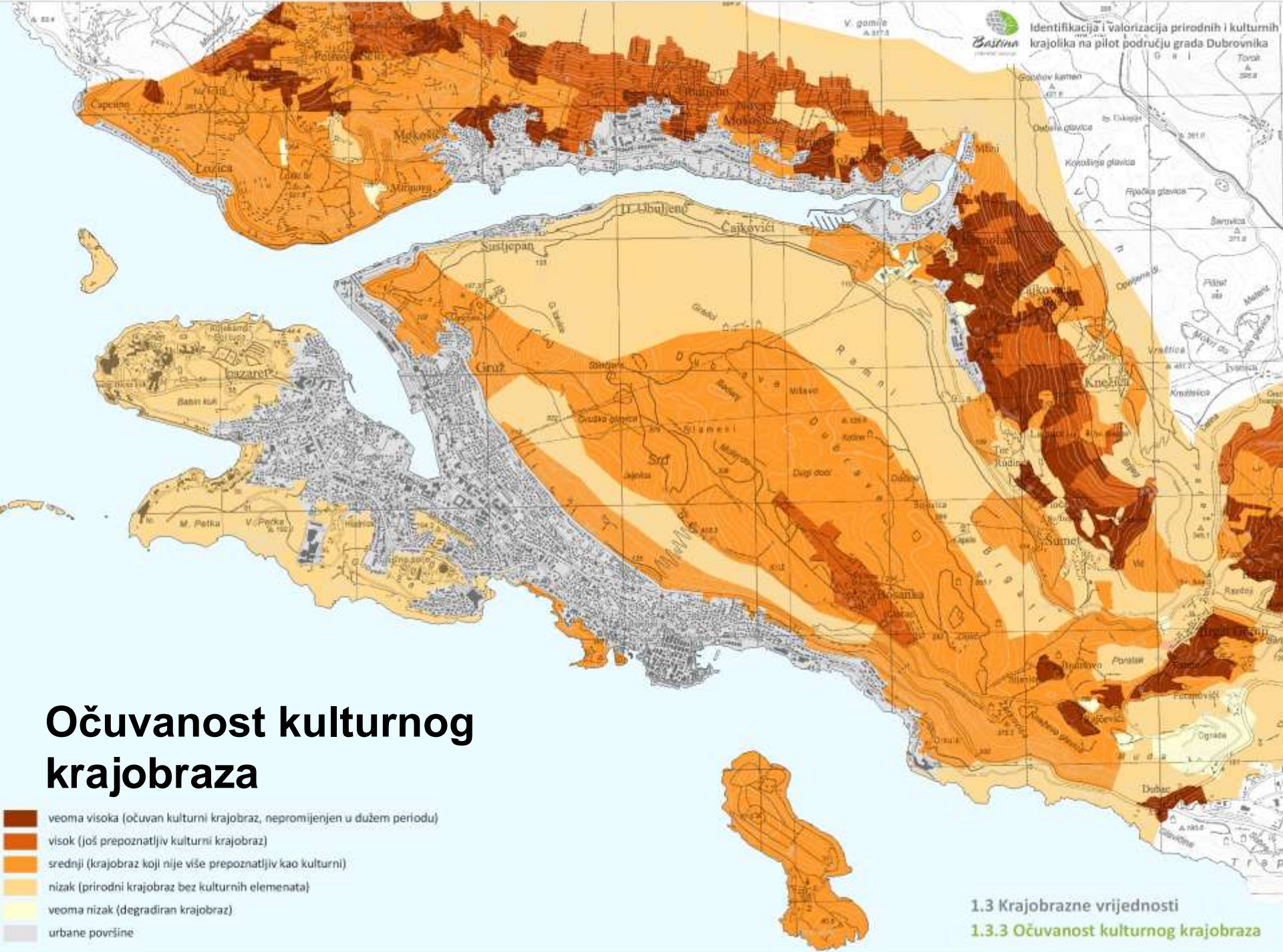
(ekonomski sektor, udio ocjene izrazito, po Institut društvenih znanosti Ivo Pilar, 2014)

- gradske zidine - 92%
- slika grada u cjelini - 73,3%
- Srđ 48%
- dubrovački ljetnikovci 35,6%
- gradske plaže 12,2%



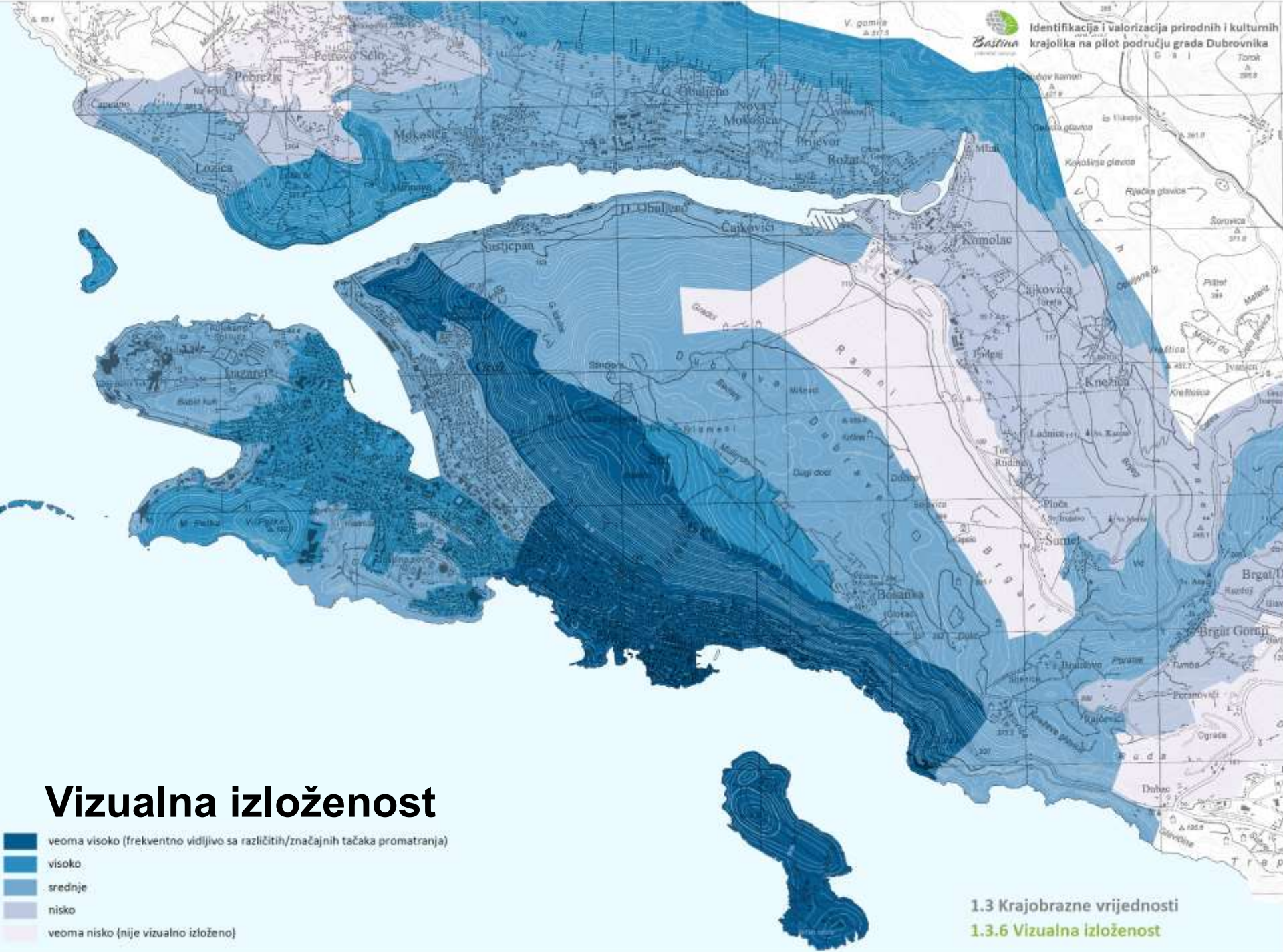
SUSTAV VRIJEDNOSTI





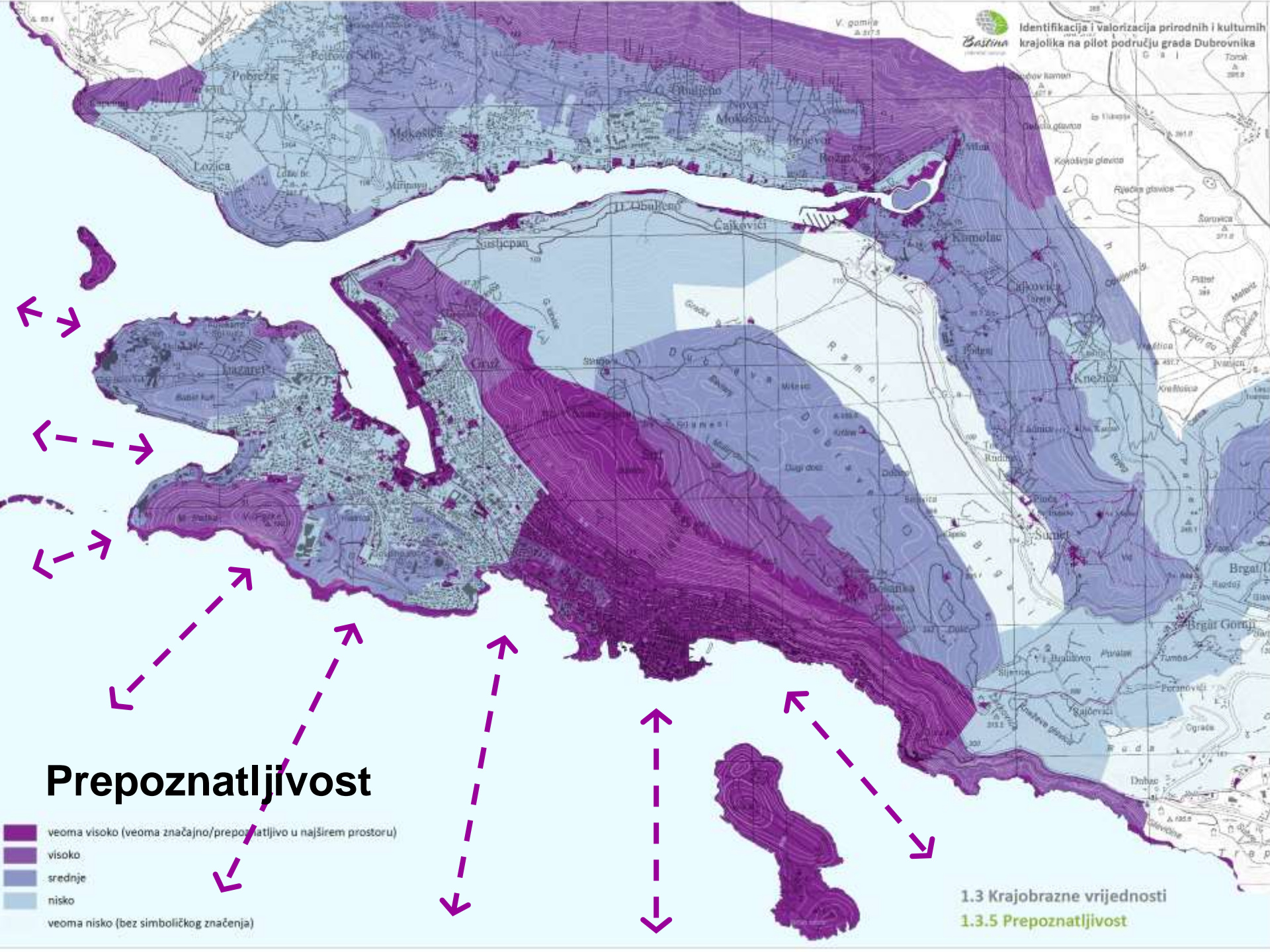
Očuvanost kulturnog krajobraza

- veoma visoka (očuvan kulturni krajobraz, nepromijenjen u dužem periodu)
- visok (još prepoznatljiv kulturni krajobraz)
- srednji (krajobraz koji nije više prepoznatljiv kao kulturni)
- nizak (prirodni krajobraz bez kulturnih elemenata)
- veoma nizak (degrađiran krajobraz)
- urbane površine



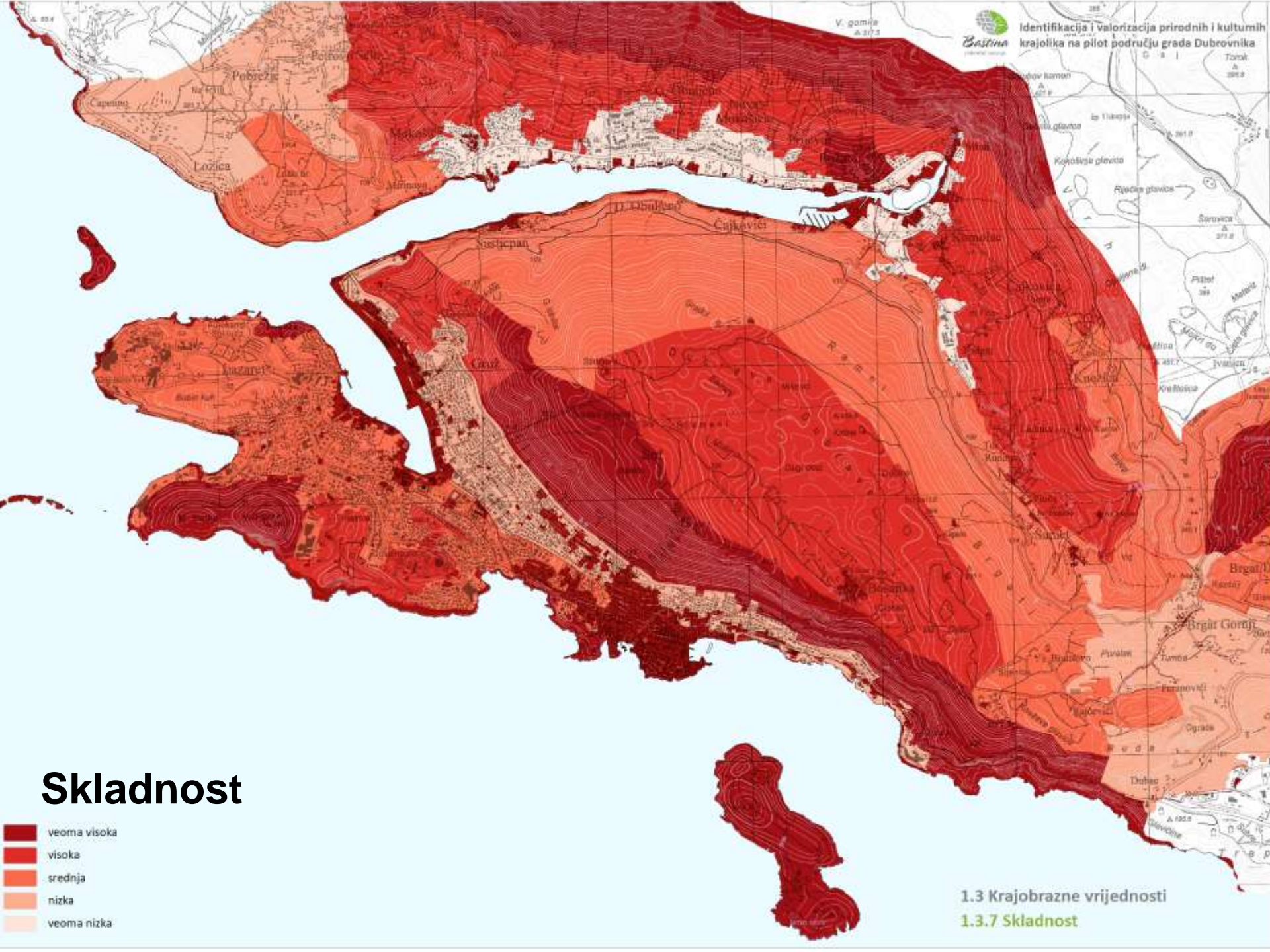
Vizualna izloženost

- veoma visoko (frekventno vidljivo sa različitih/značajnih tačaka promatranja)
- visoko
- srednje
- nisko
- veoma nisko (nije vizualno izloženo)



Prepoznatljivost

- veoma visoko (veoma značajno/prepoznatljivo u najširem prostoru)
- visoko
- srednje
- nisko
- veoma nisko (bez simboličkog značenja)



Skladnost

- veoma visoka
- visoka
- srednja
- nizka
- veoma nizka