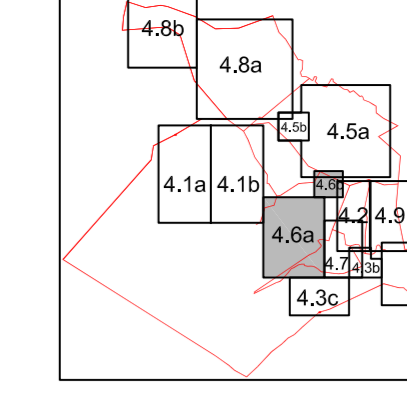


4.6b

4.6a

RASTER KARATA 1:5000



DUPRIK: DUBROVAČKO NERETVANSKA
 Općina: PLOČE
 Naziv prostornog plana: PROSTORNI PLAN UREDENJA GRADA PLOČE
 Naziv kartografskog prikaza: GRADEVINSKA PODRUČJE NASELJA PLOČE

Izvod kartografskog prikaza: 4.6a, 4.6b, 4.6c, 4.6d, 4.6e, 4.6f, 4.6g, 4.6h, 4.6i, 4.6j, 4.6k, 4.6l, 4.6m, 4.6n, 4.6o, 4.6p, 4.6q, 4.6r, 4.6s, 4.6t, 4.6u, 4.6v, 4.6w, 4.6x, 4.6y, 4.6z, 4.6aa, 4.6ab, 4.6ac, 4.6ad, 4.6ae, 4.6af, 4.6ag, 4.6ah, 4.6ai, 4.6aj, 4.6ak, 4.6al, 4.6am, 4.6an, 4.6ao, 4.6ap, 4.6aq, 4.6ar, 4.6as, 4.6at, 4.6au, 4.6av, 4.6aw, 4.6ax, 4.6ay, 4.6az, 4.6ba, 4.6bb, 4.6bc, 4.6bd, 4.6be, 4.6bf, 4.6bg, 4.6bh, 4.6bi, 4.6bj, 4.6bk, 4.6bl, 4.6bm, 4.6bn, 4.6bo, 4.6bp, 4.6bq, 4.6br, 4.6bs, 4.6bt, 4.6bu, 4.6bv, 4.6bw, 4.6bx, 4.6by, 4.6bz, 4.6ca, 4.6cb, 4.6cc, 4.6cd, 4.6ce, 4.6cf, 4.6cg, 4.6ch, 4.6ci, 4.6cj, 4.6ck, 4.6cl, 4.6cm, 4.6cn, 4.6co, 4.6cp, 4.6cq, 4.6cr, 4.6cs, 4.6ct, 4.6cu, 4.6cv, 4.6cw, 4.6cx, 4.6cy, 4.6cz, 4.6da, 4.6db, 4.6dc, 4.6dd, 4.6de, 4.6df, 4.6dg, 4.6dh, 4.6di, 4.6dj, 4.6dk, 4.6dl, 4.6dm, 4.6dn, 4.6do, 4.6dp, 4.6dq, 4.6dr, 4.6ds, 4.6dt, 4.6du, 4.6dv, 4.6dw, 4.6dx, 4.6dy, 4.6dz, 4.6ea, 4.6eb, 4.6ec, 4.6ed, 4.6ee, 4.6ef, 4.6eg, 4.6eh, 4.6ei, 4.6ej, 4.6ek, 4.6el, 4.6em, 4.6en, 4.6eo, 4.6ep, 4.6eq, 4.6er, 4.6es, 4.6et, 4.6eu, 4.6ev, 4.6ew, 4.6ex, 4.6ey, 4.6ez, 4.6fa, 4.6fb, 4.6fc, 4.6fd, 4.6fe, 4.6ff, 4.6fg, 4.6fh, 4.6fi, 4.6fj, 4.6fk, 4.6fl, 4.6fm, 4.6fn, 4.6fo, 4.6fp, 4.6fq, 4.6fr, 4.6fs, 4.6ft, 4.6fu, 4.6fv, 4.6fw, 4.6fx, 4.6fy, 4.6fz, 4.6ga, 4.6gb, 4.6gc, 4.6gd, 4.6ge, 4.6gf, 4.6gg, 4.6gh, 4.6gi, 4.6gj, 4.6gk, 4.6gl, 4.6gm, 4.6gn, 4.6go, 4.6gp, 4.6gq, 4.6gr, 4.6gs, 4.6gt, 4.6gu, 4.6gv, 4.6gw, 4.6gx, 4.6gy, 4.6gz, 4.6ha, 4.6hb, 4.6hc, 4.6hd, 4.6he, 4.6hf, 4.6hg, 4.6hh, 4.6hi, 4.6hj, 4.6hk, 4.6hl, 4.6hm, 4.6hn, 4.6ho, 4.6hp, 4.6hq, 4.6hr, 4.6hs, 4.6ht, 4.6hu, 4.6hv, 4.6hw, 4.6hx, 4.6hy, 4.6hz, 4.6ia, 4.6ib, 4.6ic, 4.6id, 4.6ie, 4.6if, 4.6ig, 4.6ih, 4.6ii, 4.6ij, 4.6ik, 4.6il, 4.6im, 4.6in, 4.6io, 4.6ip, 4.6iq, 4.6ir, 4.6is, 4.6it, 4.6iu, 4.6iv, 4.6iw, 4.6ix, 4.6iy, 4.6iz, 4.6ja, 4.6jb, 4.6jc, 4.6jd, 4.6je, 4.6jf, 4.6jg, 4.6jh, 4.6ji, 4.6jj, 4.6jk, 4.6jl, 4.6jm, 4.6jn, 4.6jo, 4.6jp, 4.6jq, 4.6jr, 4.6js, 4.6jt, 4.6ju, 4.6jv, 4.6jw, 4.6jx, 4.6jy, 4.6jz, 4.6ka, 4.6kb, 4.6kc, 4.6kd, 4.6ke, 4.6kf, 4.6kg, 4.6kh, 4.6ki, 4.6kj, 4.6kk, 4.6kl, 4.6km, 4.6kn, 4.6ko, 4.6kp, 4.6kq, 4.6kr, 4.6ks, 4.6kt, 4.6ku, 4.6kv, 4.6kw, 4.6kx, 4.6ky, 4.6kz, 4.6la, 4.6lb, 4.6lc, 4.6ld, 4.6le, 4.6lf, 4.6lg, 4.6lh, 4.6li, 4.6lj, 4.6lk, 4.6ll, 4.6lm, 4.6ln, 4.6lo, 4.6lp, 4.6lq, 4.6lr, 4.6ls, 4.6lt, 4.6lu, 4.6lv, 4.6lw, 4.6lx, 4.6ly, 4.6lz, 4.6ma, 4.6mb, 4.6mc, 4.6md, 4.6me, 4.6mf, 4.6mg, 4.6mh, 4.6mi, 4.6mj, 4.6mk, 4.6ml, 4.6mm, 4.6mn, 4.6mo, 4.6mp, 4.6mq, 4.6mr, 4.6ms, 4.6mt, 4.6mu, 4.6mv, 4.6mw, 4.6mx, 4.6my, 4.6mz, 4.6na, 4.6nb, 4.6nc, 4.6nd, 4.6ne, 4.6nf, 4.6ng, 4.6nh, 4.6ni, 4.6nj, 4.6nk, 4.6nl, 4.6nm, 4.6nn, 4.6no, 4.6np, 4.6nq, 4.6nr, 4.6ns, 4.6nt, 4.6nu, 4.6nv, 4.6nw, 4.6nx, 4.6ny, 4.6nz, 4.6oa, 4.6ob, 4.6oc, 4.6od, 4.6oe, 4.6of, 4.6og, 4.6oh, 4.6oi, 4.6oj, 4.6ok, 4.6ol, 4.6om, 4.6on, 4.6oo, 4.6op, 4.6oq, 4.6or, 4.6os, 4.6ot, 4.6ou, 4.6ov, 4.6ow, 4.6ox, 4.6oy, 4.6oz, 4.6pa, 4.6pb, 4.6pc, 4.6pd, 4.6pe, 4.6pf, 4.6pg, 4.6ph, 4.6pi, 4.6pj, 4.6pk, 4.6pl, 4.6pm, 4.6pn, 4.6po, 4.6pp, 4.6pq, 4.6pr, 4.6ps, 4.6pt, 4.6pu, 4.6pv, 4.6pw, 4.6px, 4.6py, 4.6pz, 4.6qa, 4.6qb, 4.6qc, 4.6qd, 4.6qe, 4.6qf, 4.6qg, 4.6qh, 4.6qi, 4.6qj, 4.6qk, 4.6ql, 4.6qm, 4.6qn, 4.6qo, 4.6qp, 4.6qq, 4.6qr, 4.6qs, 4.6qt, 4.6qu, 4.6qv, 4.6qw, 4.6qx, 4.6qy, 4.6qz, 4.6ra, 4.6rb, 4.6rc, 4.6rd, 4.6re, 4.6rf, 4.6rg, 4.6rh, 4.6ri, 4.6rj, 4.6rk, 4.6rl, 4.6rm, 4.6rn, 4.6ro, 4.6rp, 4.6rq, 4.6rr, 4.6rs, 4.6rt, 4.6ru, 4.6rv, 4.6rw, 4.6rx, 4.6ry, 4.6rz, 4.6sa, 4.6sb, 4.6sc, 4.6sd, 4.6se, 4.6sf, 4.6sg, 4.6sh, 4.6si, 4.6sj, 4.6sk, 4.6sl, 4.6sm, 4.6sn, 4.6so, 4.6sp, 4.6sq, 4.6sr, 4.6ss, 4.6st, 4.6su, 4.6sv, 4.6sw, 4.6sx, 4.6sy, 4.6sz, 4.6ta, 4.6tb, 4.6tc, 4.6td, 4.6te, 4.6tf, 4.6tg, 4.6th, 4.6ti, 4.6tj, 4.6tk, 4.6tl, 4.6tm, 4.6tn, 4.6to, 4.6tp, 4.6tq, 4.6tr, 4.6ts, 4.6tt, 4.6tu, 4.6tv, 4.6tw, 4.6tx, 4.6ty, 4.6tz, 4.6ua, 4.6ub, 4.6uc, 4.6ud, 4.6ue, 4.6uf, 4.6ug, 4.6uh, 4.6ui, 4.6uj, 4.6uk, 4.6ul, 4.6um, 4.6un, 4.6uo, 4.6up, 4.6uq, 4.6ur, 4.6us, 4.6ut, 4.6uu, 4.6uv, 4.6uw, 4.6ux, 4.6uy, 4.6uz, 4.6va, 4.6vb, 4.6vc, 4.6vd, 4.6ve, 4.6vf, 4.6vg, 4.6vh, 4.6vi, 4.6vj, 4.6vk, 4.6vl, 4.6vm, 4.6vn, 4.6vo, 4.6vp, 4.6vq, 4.6vr, 4.6vs, 4.6vt, 4.6vu, 4.6vv, 4.6vw, 4.6vx, 4.6vy, 4.6vz, 4.6wa, 4.6wb, 4.6wc, 4.6wd, 4.6we, 4.6wf, 4.6wg, 4.6wh, 4.6wi, 4.6wj, 4.6wk, 4.6wl, 4.6wm, 4.6wn, 4.6wo, 4.6wp, 4.6wq, 4.6wr, 4.6ws, 4.6wt, 4.6wu, 4.6wv, 4.6wz, 4.6xa, 4.6xb, 4.6xc, 4.6xd, 4.6xe, 4.6xf, 4.6xg, 4.6xh, 4.6xi, 4.6xj, 4.6xk, 4.6xl, 4.6xm, 4.6xn, 4.6xo, 4.6xp, 4.6xq, 4.6xr, 4.6xs, 4.6xt, 4.6xu, 4.6xv, 4.6xw, 4.6xx, 4.6xy, 4.6xz, 4.6ya, 4.6yb, 4.6yc, 4.6yd, 4.6ye, 4.6yf, 4.6yg, 4.6yh, 4.6yi, 4.6yj, 4.6yk, 4.6yl, 4.6ym, 4.6yn, 4.6yo, 4.6yp, 4.6yq, 4.6yr, 4.6ys, 4.6yt, 4.6yu, 4.6yv, 4.6yw, 4.6yx, 4.6yy, 4.6yz, 4.6za, 4.6zb, 4.6zc, 4.6zd, 4.6ze, 4.6zf, 4.6zg, 4.6zh, 4.6zi, 4.6zj, 4.6zk, 4.6zl, 4.6zm, 4.6zn, 4.6zo, 4.6zp, 4.6zq, 4.6zr, 4.6zs, 4.6zt, 4.6zu, 4.6zv, 4.6zw, 4.6zx, 4.6zy, 4.6zz

Šifra: 1: Duga Kos Pletić dipl. ing. arh.
 2: Prvoje Jarmak dipl. ing. grad.
 3: Česen (leto) dipl. ing. arh.
 4: Maja Vitek dipl. ing. arh.
 5: Andreja Šugar dipl. ing. grad.
 6: Ivan Kapor dipl. ing. arh.
 7: Neda Bakula dipl. arh.
 8: Ana Palčić dipl. ing. grad.
 Pital: Gravitacijski vijek Grada Ploče
 Mate Dugandžić
 Pital: nadležnog tijela

TUMAČ PLANSKOG ZNAKOVJE
 RAZVOJI I UREDENJE NASELJA
 GRADEVINSKO PODRUČJE NASELJA
 GRADEVINSKO PODRUČJE IZGRADENO
 GRADEVINSKO PODRUČJE NEIZGRADENO
 IS1 POVIŠINE INFRASTRUKTURNIH SUSTAVA
 R4 SPORTSKO-REKREACIJSKA NAMJENA
 GOSPODARSKA NAMJENA - PROIZVODNA (igr./relezi.)
 UGOSTITELJSKO TURISTIČKA NAMJENA
 GROBLJE
 ZAŠTITNI KORIDOR PROMETNICA
 ZAŠTITNI KORIDOR DALEKOVODA
 ZONA POSEBNE NAMJENE
 ZONA ZABRANJENE IZGRADNJE
 ZONA OGRANIČENE IZGRADNJE
 OBUHVAT OBEZBENE ERADE PROSTORNOG PLANA UREDENJA
 OBUHVAT OBEZBENE ERADE PROSTORNOG PLANA UREDENJA
 OBALNA LINIJA
 70m OD OBALNE CRTE
 100m OD OBALNE CRTE
 ZASTIČENO OBALNO PODRUČJE (ZOP)
 GRANICA NASELJA
 OBUHVAT IZMJENE, DOPUNE ILI STAVLJANJA
 VAN SNAGE POSTOJEĆIH PLANOVA
 TURIZAMI I REKREACIJA
 GRADEVINSKA PODRUČJA NASELJA
 LUKA, INDUSTRIJA, SERVISI, SKLADIŠTA

